

DWG. NO.

DESCRIPTION

___400-0 TYPICAL IMPROVED STREET SECTION
 ___400-1 TYPICAL UNIMPROVED STREET SECTION
 ___400-2 TYPICAL ALLEY
 ___400-3 SIDEWALK & DRIVEWAY SECTIONS
 ___400-4 TYPICAL DRIVEWAY PLAN

___600-0 CONCRETE CURB & GUTTER
 ___600-1 CONCRETE CURB
 ___600-2 CURB INLET
 ___600-3 CATCH BASIN – TRAPPED
 ___600-4 MISC. SIDEWALK DETAILS
 ___600-5 MOUNTABLE CURB

NOTE: STATE OF OHIO DEPT. OF
 TRANS. CONST. & MAT'L.
 SPECS. SHALL GOVERN
 WHERE REFERENCED HERE IN.

___800-WS-2 WATER METER/EXTERIOR REGISTER
 ___800-WS-3 WATER SERVICE INSTALLATION ATTACHMENTS A & B
 ___800-WS-3A MULTIPLE OUTSIDE SHUT OFF VALVES
 ___800-WS-4 COMMERCIAL MULTIPLE METERS
 ___800-WS-4A COMMERCIAL MULTIPLE METERS (Domestic/Fire/Irrigation)
 ___800-WS-5 METER SETTING 1 1/2" – 6"
 ___800-WS-5A DUAL METER SETTING
 ___800-WS-5B METER MANIFOLDS
 ___800-WS-6 20" METER PIT for 1" or SMALLER METERS
 ___800-WS-6A 48" METER PIT for 1 1/2" or 2" METERS
 ___800-WS-6B METER PIT – DUAL METER SETTING

___800-3 BLOCKING DETAIL – BENDS
 ___800-4 BLOCKING DETAIL – TEES & PLUGS
 ___800-5 HYDRANT DETAILS
 ___800-6 HYDRANT SETTINGS
 ___800-7 VALVE BOX GRADE ADJUSTMENT
 ___800-8 TYPICAL POTABLE WATER BLOW-OFF
 ___800-9 WATERLINE LOWERING DETAIL

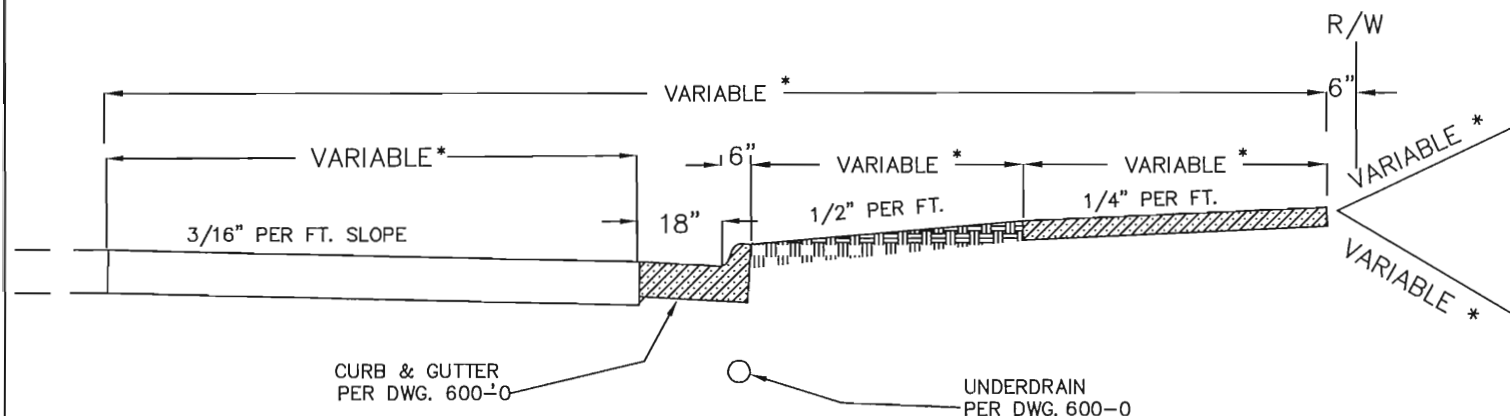
___900-0 PRE-CAST CONCRETE MANHOLES
 ___900-1 PRE-CAST CONCRETE MANHOLES – SLABTOP
 ___900-2 DROP MANHOLE
 ___900-2A INSIDE DROP MANHOLE
 ___900-3 MANHOLE GRADE ADJUSTMENT
 ___900-4 HOUSE SEWER LATERALS
 ___900-4A SEWER LATERAL DISCONNECT
 ___900-5 TRENCH DETAILS
 ___900-6 PRE-CAST CONCRETE MANHOLE WITH PREFORMED CONNECTOR
 ___900-7 STANDARD SAMPLING MANHOLE
 ___900-8 TYPICAL ROOFLEADER CONNECTION/DISCONNECTION
 ___900-9 SEWER LATERAL CLEAN OUT

CITY OF NEWARK, OHIO

DIVISION OF ENGINEERING

STANDARD DRAWING INDEX

5-06
 KELLEY
 REVISED
 05-06 KELLEY
 07-18 KELLEY



* FOR VARIABLE DIMENSIONS SEE REQUIREMENTS SET FORTH IN SUBDIV. ORD. OF THE CITY OF NEWARK, OHIO ORD. 93-62 OCT. 3, 1994

PAVEMENT COMPOSITION SHALL BE:

AS REQUIRED IN S5.08 OF THE SUBDIVISION ORDINANCE
OF THE CITY OF NEWARK, OHIO OR
OTHER MATERIALS APPROVED BY THE CITY ENGINEER

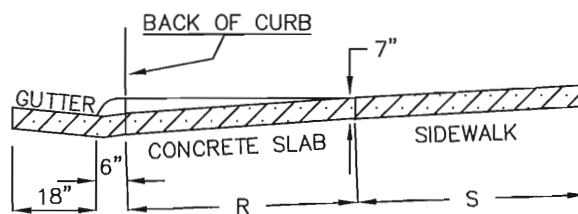
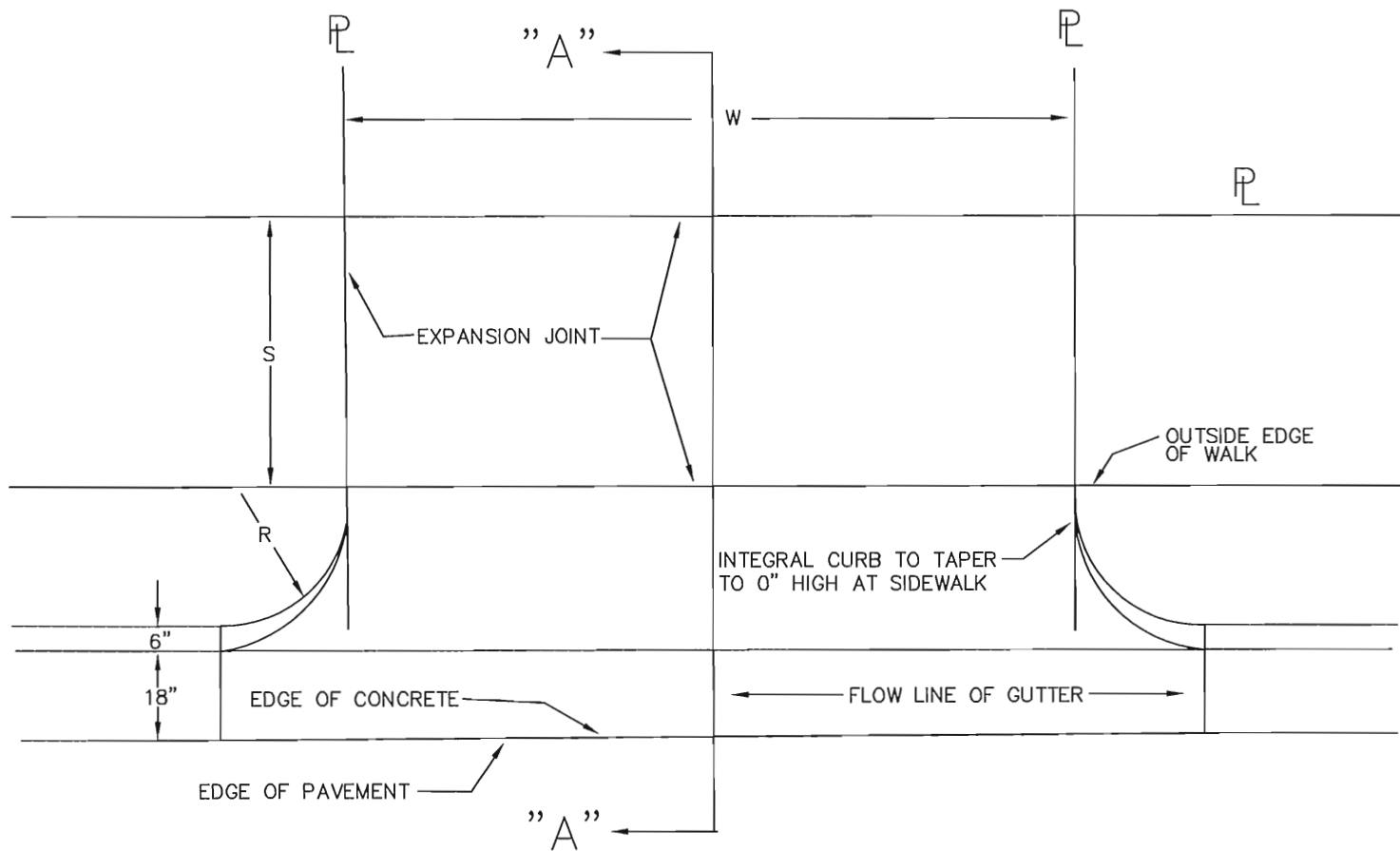
THE ACTUAL THICKNESSES OF THE PAVEMENT OR PAVEMENT COURSES
SHALL BE DESIGNED BY AN OHIO REGISTERED PROFESSIONAL ENGINEER
USING THE PROCEDURES SET FORTH IN:

- SECTION S5.08 OF THE SUBDIVISION ORDINANCE OF
THE CITY OF NEWARK, OHIO ORD. 93-62 OCT. 3, 1994
- THE ASPHALT INSTITUTE, MANUAL SERIES NO. 1 (MS-1)
TITLED "THICKNESS DESIGN-ASPHALT PAVEMENTS FOR
HIGHWAYS AND STREETS
- OHIO READY MIXED CONCRETE ASSOC., OHIO CONCRETE
PAVERS COUNCIL AND PORTLAND CEMENT ASSOC.-
"DESIGN MANUAL-PORTLAND CEMENT CONCRETE PAVEMENTS".

CITY OF NEWARK, OHIO
DIVISION OF ENGINEERING

STANDARD DRAWING 400-0
TYPICAL IMPROVED STREET SECTION

4-81
REVISED
5-86 KELLEY



SECTION "A" — "A"

R=FACE OF SIDEWALK TO BACK OF CURB
W=VARIABLE ALLEY WIDTH
S=VARIABLE SIDEWALK WIDTH

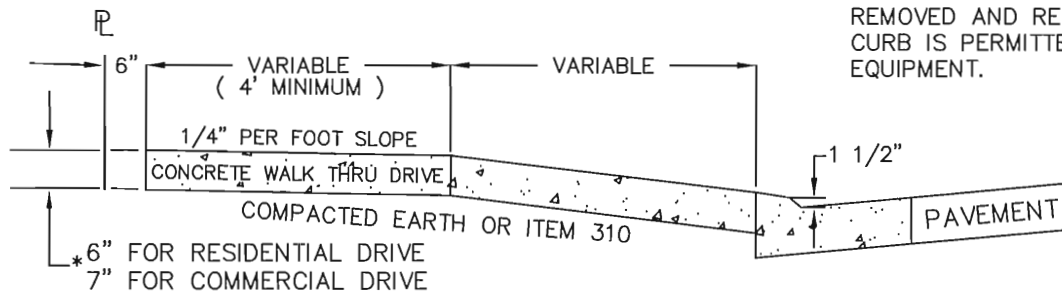
ALL ALLEY APRONS SHALL BE
7" CLASS "C" CONCRETE

NOTE: CONCRETE APPROACH MUST MEET SIDEWALK,
ALLEY PAVEMENT AND GUTTER AT GRADE.

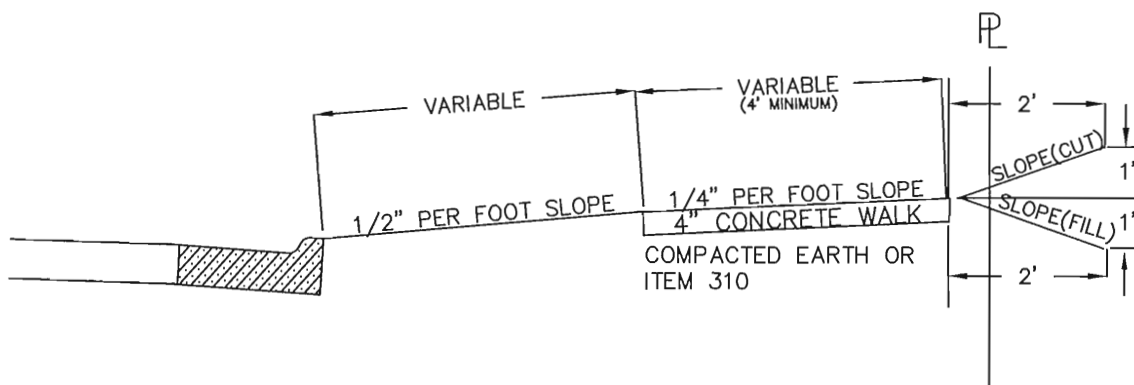
CURB CUTS LIMITED BY
ORDINANCE 82-71.

ALL DRIVEWAY APRONS SHALL
BE * CLASS "C" CONCRETE.

IF EXISTING CURB IS STANDARD 6"
HEIGHT, REMOVE CURB AND REPLACE
WITH 1 1/2" HIGH AS SHOWN. IF
REMOVING CURB LEAVES LESS THAN
5' OF CURB SECTION, IT SHALL BE
REMOVED AND REPLACED. SAWCUTTING
CURB IS PERMITTED WITH PROPER
EQUIPMENT.



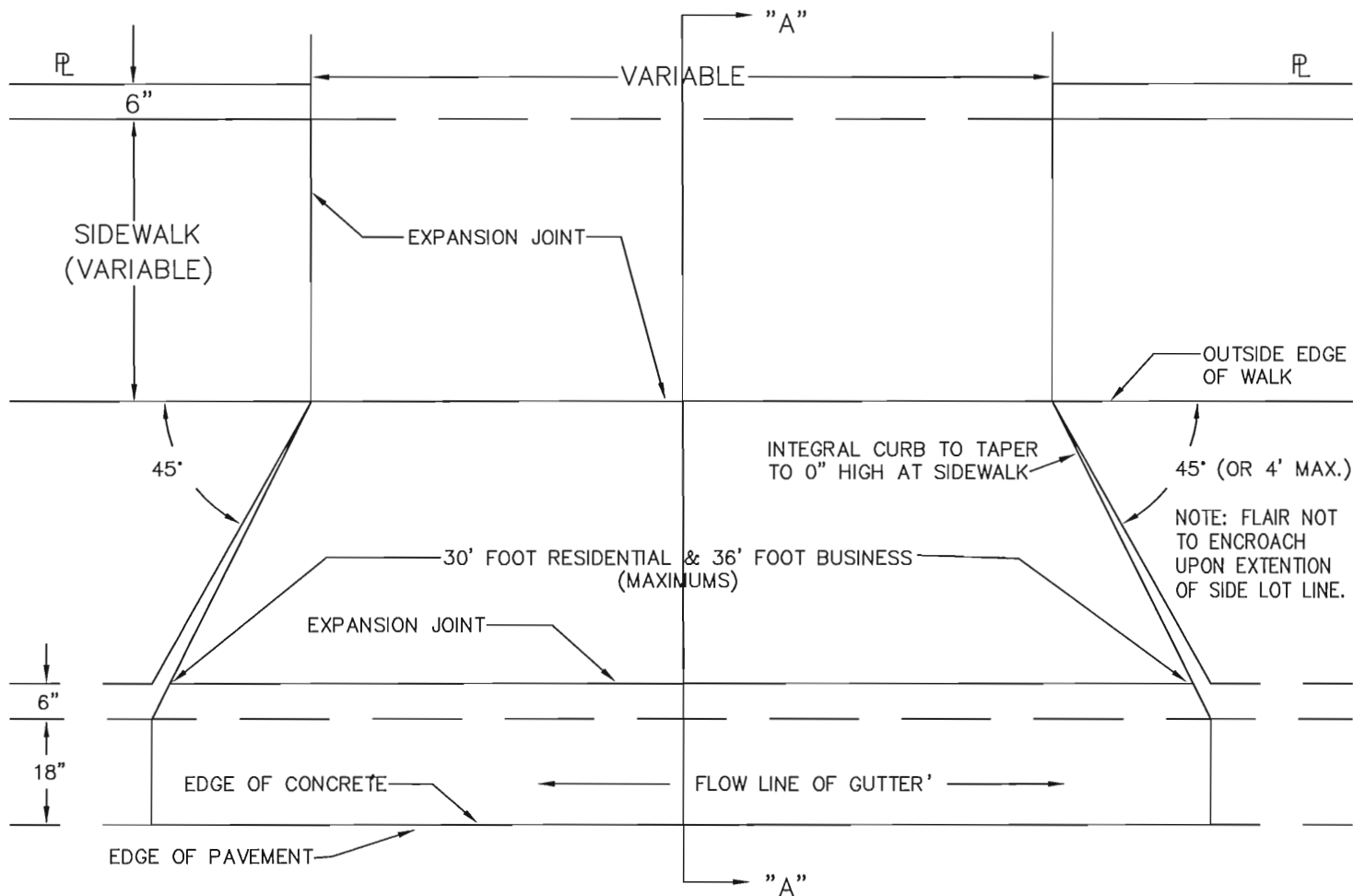
DRIVEWAY



SIDEWALK

NO SIDEWALKS SHALL BE CONSTRUCTED OR RECONSTRUCTED OR REPAVED UNTIL THE PROPER LINE AND GRADE FOR THE SAME SHALL HAVE BEEN OBTAINED FROM THE CITY ENGINEER AND THE SAME SHALL BE CONSTRUCTED OR RECONSTRUCTED, AS THE CASE MAY BE, IN ACCORDANCE WITH THE LINES AND GRADES GIVEN BY THE ENGINEER AND SUBJECT TO HIS SUPERINTENDENCE, DIRECTIONS AND CONTROL.

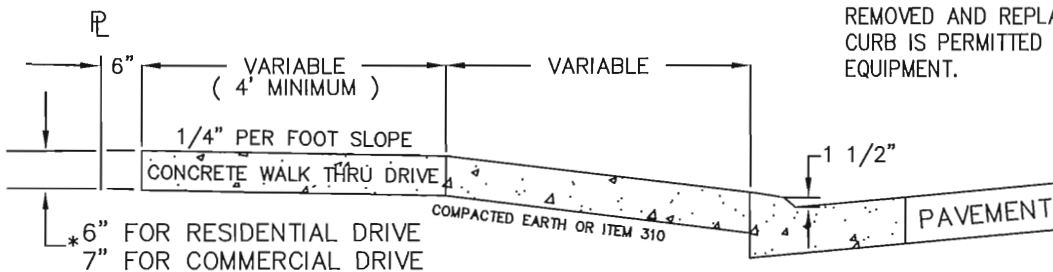
ALL CONCRETE TO BE CLASS "C" PER 499



CURB CUTS LIMITED BY
ORDINANCE 82-71.

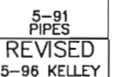
ALL DRIVEWAY APRONS SHALL
BE * CLASS "C" CONCRETE.

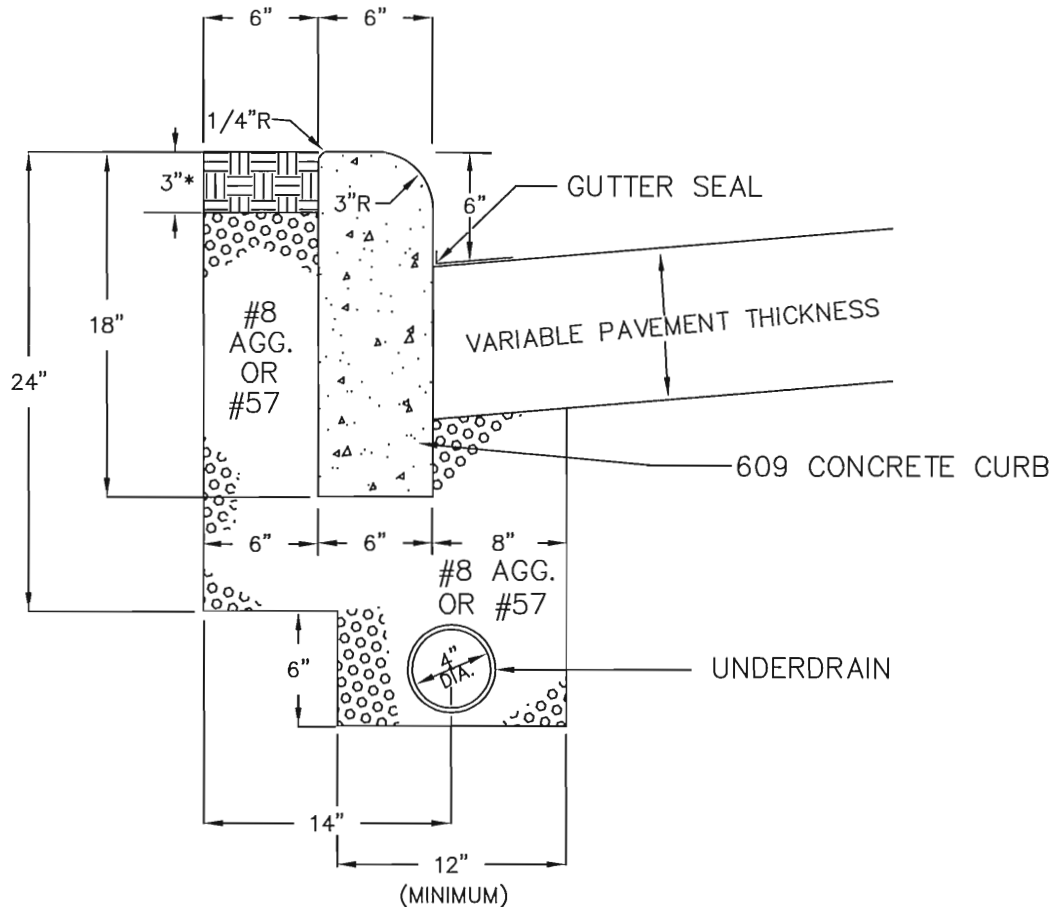
IF EXISTING CURB IS STANDARD 6"
HEIGHT, REMOVE CURB AND REPLACE
WITH 1 1/2" HIGH AS SHOWN. IF
REMOVING CURB LEAVES LESS THAN
5' OF CURB SECTION, IT SHALL BE
REMOVED AND REPLACED. SAWCUTTING
CURB IS PERMITTED WITH PROPER
EQUIPMENT.



SECTION "A" - "A"

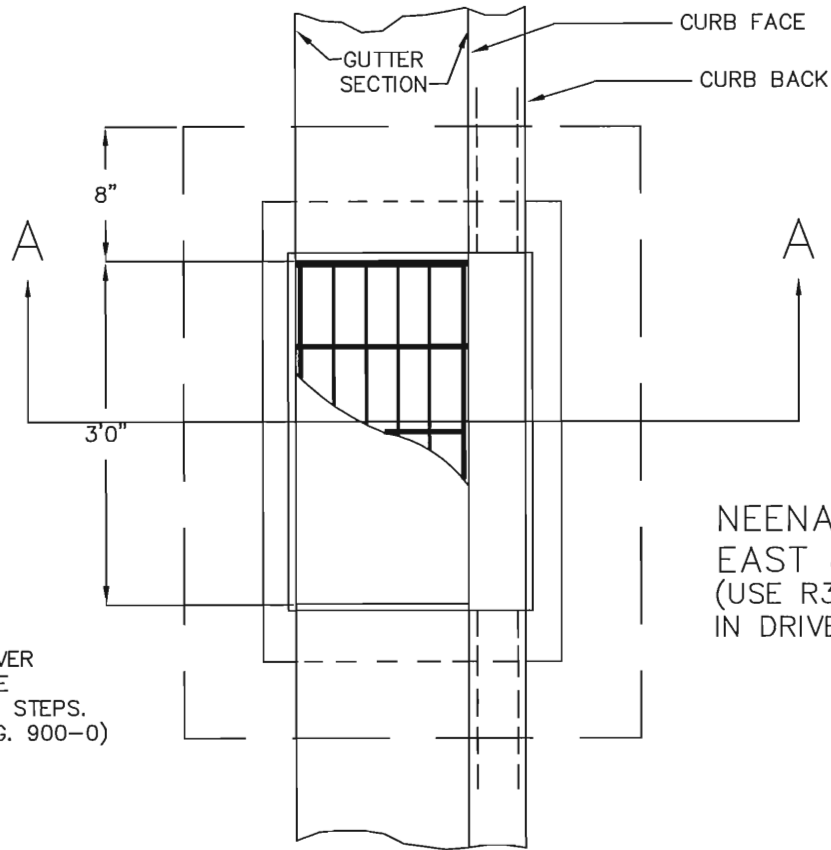
NO DRIVEWAY APPROACH SHALL BE CONSTRUCTED OR RECONSTRUCTED OR REPAVED UNTIL THE PROPER LINE AND GRADE FOR THE SAME SHALL HAVE BEEN OBTAINED FROM THE CITY ENGINEER AND THE SAME SHALL BE CONSTRUCTED OR RECONSTRUCTED, AS THE CASE MAY BE IN ACCORDANCE WITH THE LINES AND GRADES GIVEN BY THE ENGINEER AND SUBJECT TO HIS SUPERINTENDENCE, DIRECTION AND CONTROL.





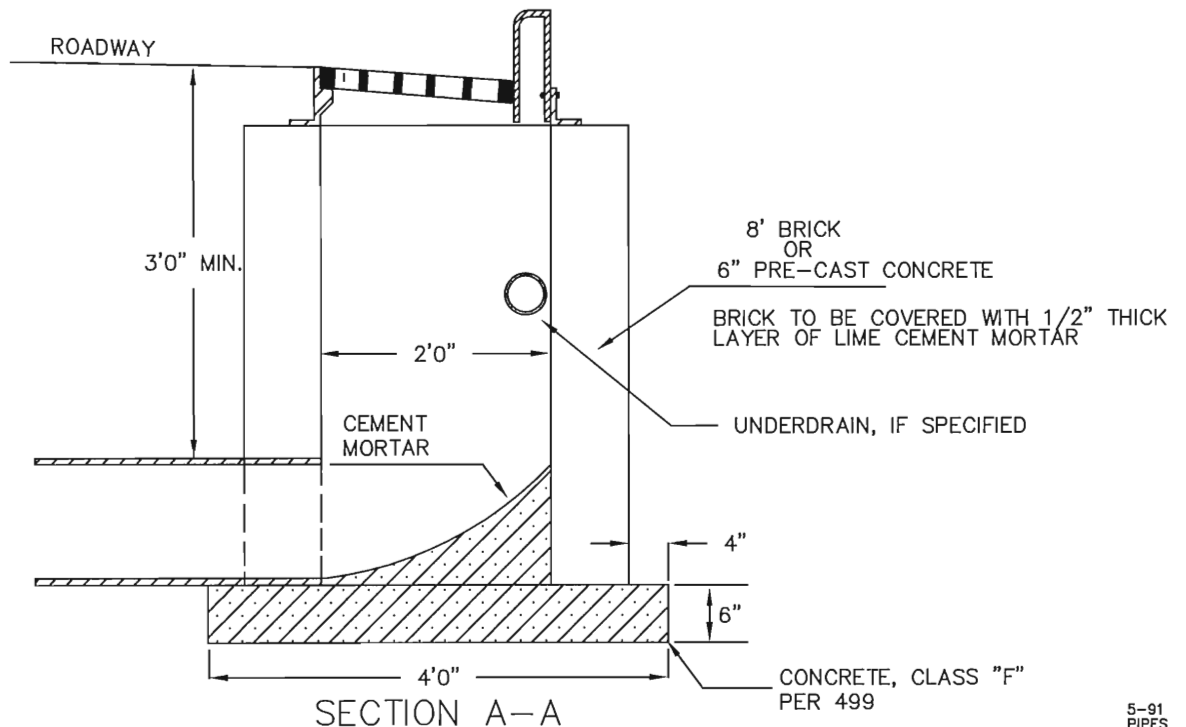
ALL EXPOSED SURFACES OF CONCRETE CURB TO BE FLOAT FINISHED.

* 3" OF TOPSOIL PER ITEM 653, SEEDED & MULCHED WITH URBAN MIX PER ITEM 659.



NOTE: ALL CURB INLETS OVER 4' DEEP SHALL HAVE MANHOLE APPROVED STEPS. (SEE STANDARD DWG. 900-0)

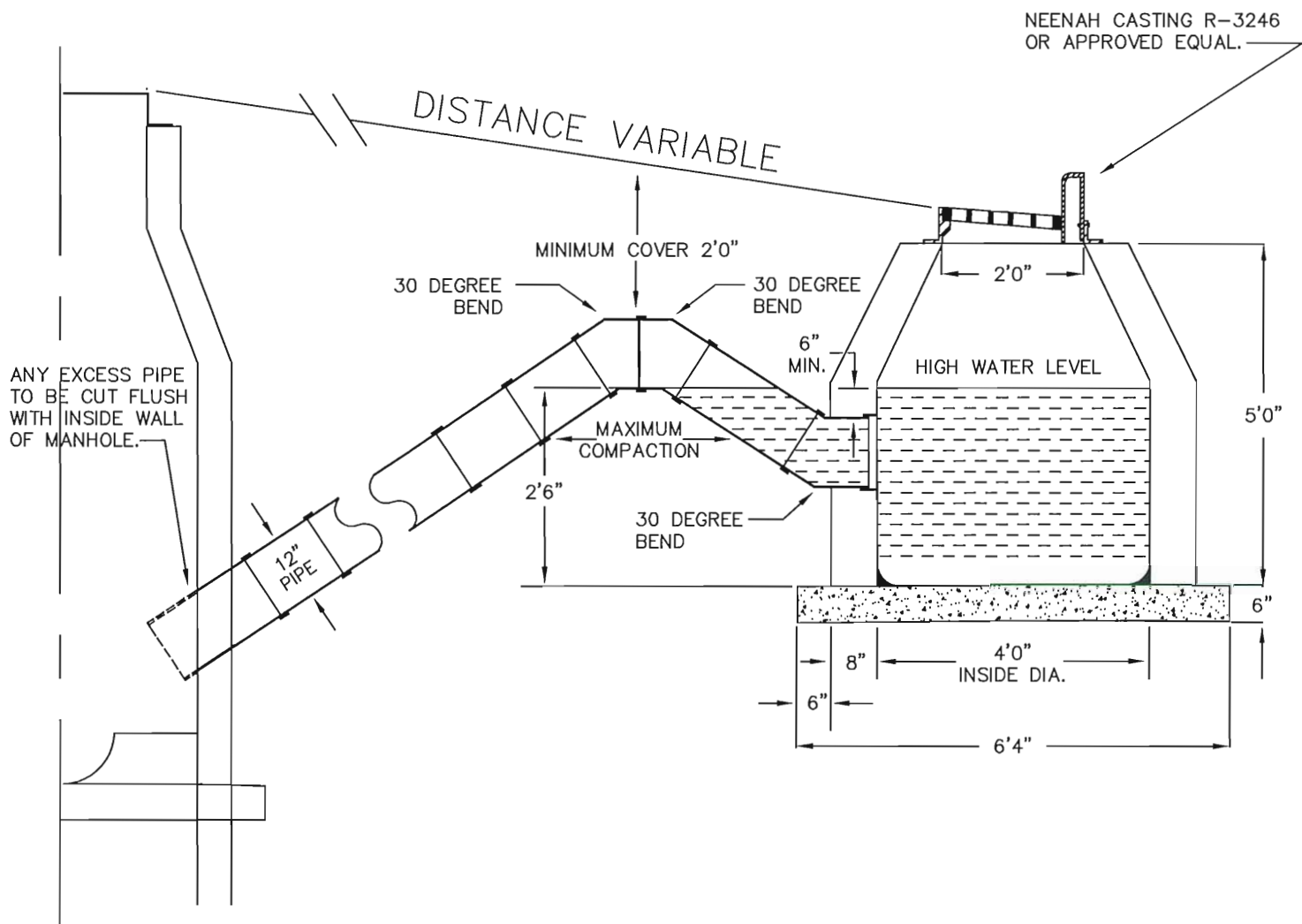
PROVIDE 3"-4" OF SLOPE TO OUTLET PIPE USING CONCRETE / CEMENT MORTAR



CITY OF NEWARK, OHIO
DIVISION OF ENGINEERING

STANDARD DRAWING 600-2
CURB INLET

5-91
PIPES
REVISED
5-96 KELLEY



NOTE:

FOR COMBINED SYSTEM ONLY – FOR REBUILD ONLY

MIN. 30° BENDS NO GREATER THAN 45° BENDS PLASTIC PIPE

INSIDE & OUTSIDE OF CATCH BASIN WALL TO BE PLASTERED 1/2" THICK WITH A MORTAR OF EQUAL OF SAND AND PORTLAND CEMENT.

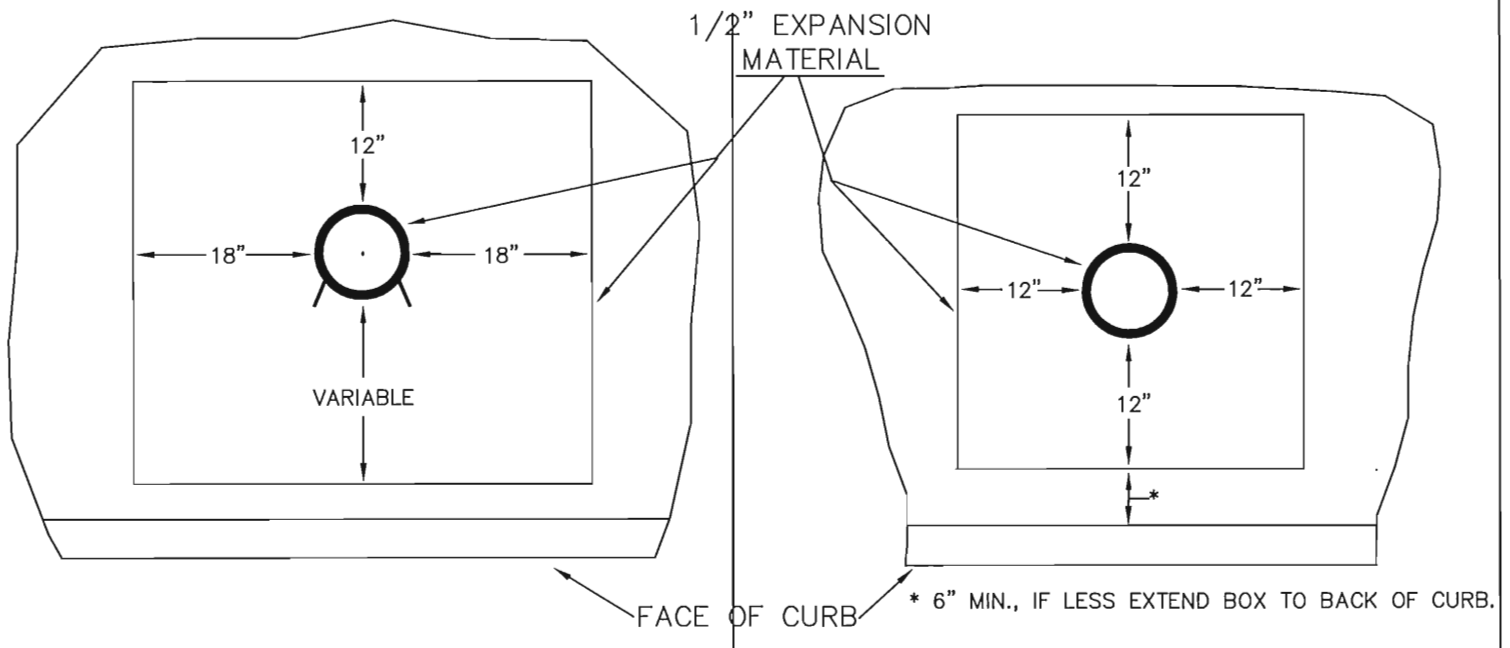
GRADE OF OUTLET END OF TRAP VARIES WITH DEPTH OF MANHOLE. SIZE SHOWN IS 12" DIA. SIZE WILL VARY ON REPLACEMENT JOBS.

IF MANHOLE IS EXCEPTIONALLY SHALLOW, ONE 30 DEGREE BEND MAY BE OMITTED AND PIPE MAY BE LAID WITH SLIGHTLY BROKEN JOINTS TO ACHIEVE A DESCENDING GRADE.

CITY OF NEWARK, OHIO
DIVISION OF ENGINEERING

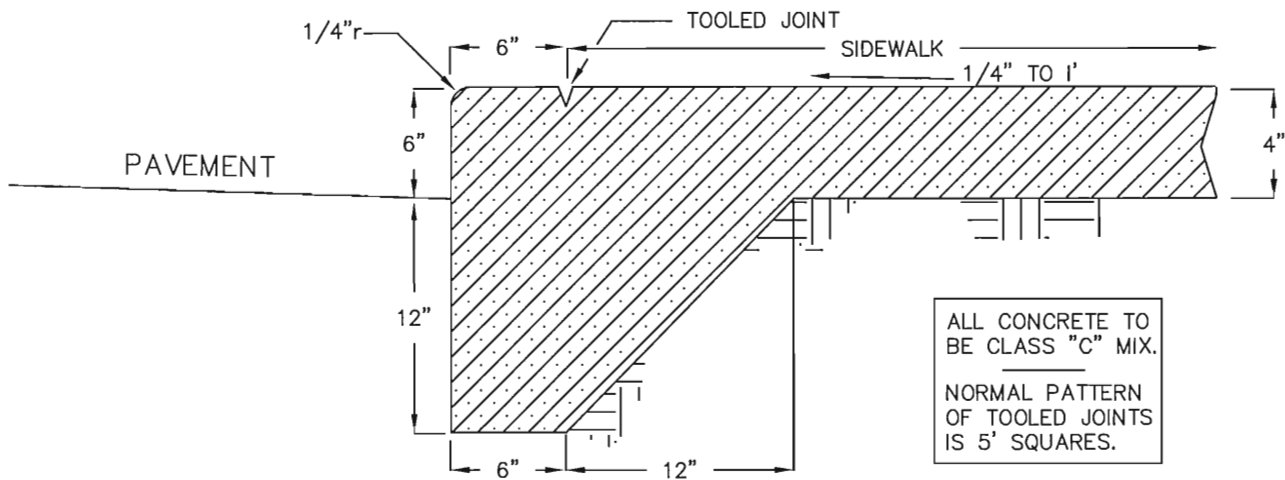
STANDARD DRAWING 600-3
CATCH BASIN-TRAPPED

5-91
PIPES
REVISED
5-96 KELLEY

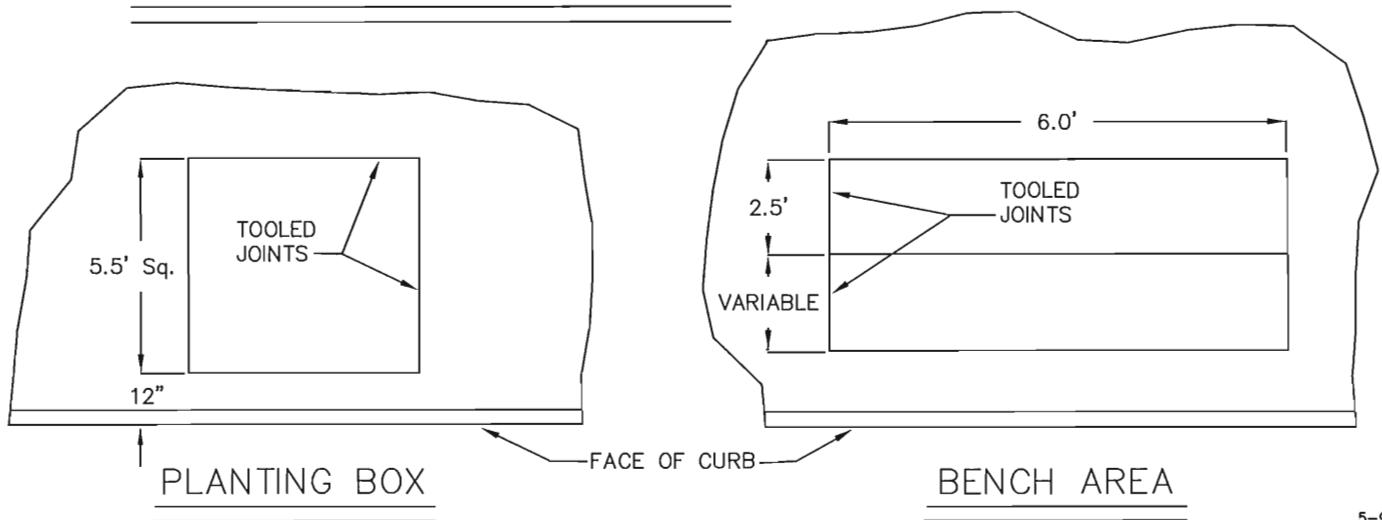


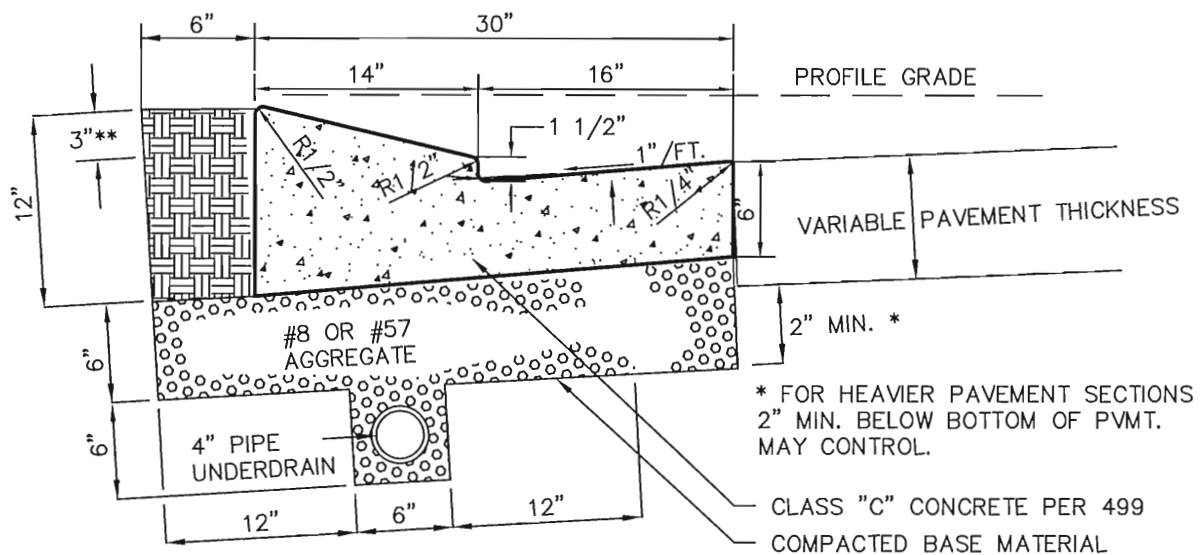
HYDRANT BOXING

TELEPHONE & POWER POLES



SIDEWALK WITH INTEGRAL CURB





VOLUME PER LINEAL FOOT OF CURB & GUTTER = 1.61 CU. FT.
OR 232 SQ. INCHES.

ALL EXPOSED SURFACES OF CONCRETE CURB AND GUTTER TO
BE FLOAT FINISHED.

UNDERDRAIN CONSTRUCTED AS PER STATE OF OHIO DEPT. OF TRANS.
CONST. & MAT'L. SPECS ITEM 605, MATERIAL PER 707.17 (PVC PERFORATED PIPE)

** 3" OF TOPSOIL PER ITEM 653, SEEDED & MULCHED WITH URBAN MIX PER ITEM 659.

WATER METER DEPARTMENT
EAST MAIN STREET
NEWARK, OHIO

METER DEPT: 349-6775
WATER OFFICE: 349-6730

REMOTE REGISTER TO BE 4'-5'
ABOVE GROUND ON THE FRONT OR
ON THE SIDE NEAR THE FRONT.
NOT PERMITTED ON THE REAR.

WIRE ENCASED IN WEATHER-PROOF
CONDUIT(WHERE IT IS INACCESSIBLE).*
WIRE TO BE FURNISHED BY THE
DIVISION OF WATER. (NO SPLICING PERMITTED).

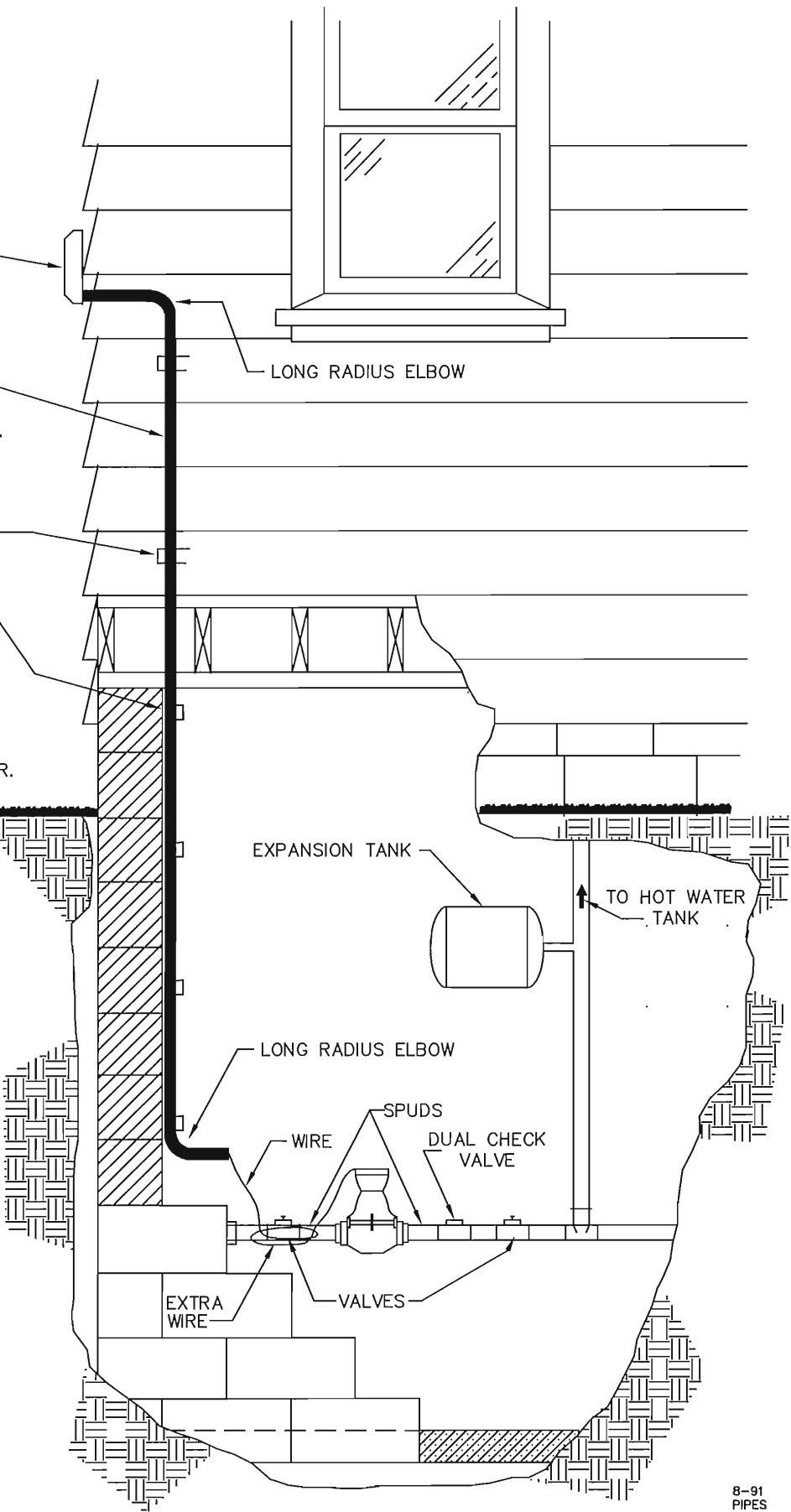
STANDARD WALL CLAMPS
INSTALLED AT 18" INTERVALS.

*NOTE: WHEN THE WIRE IS CONSIDERED
INACCESSIBLE FOR REPLACEMENT,
THE WIRE IS TO BE ENCASED IN
WEATHER PROOF CONDUIT.
COMPLETE WATER METER/EXTERIOR
REGISTER INSTALLATION TO BE
INSPECTED AND APPROVED BY THE
CITY OF NEWARK, DIVISION OF WATER.

DIMENSIONAL DESIGN FOR
METERS AND CONNECTIONS.

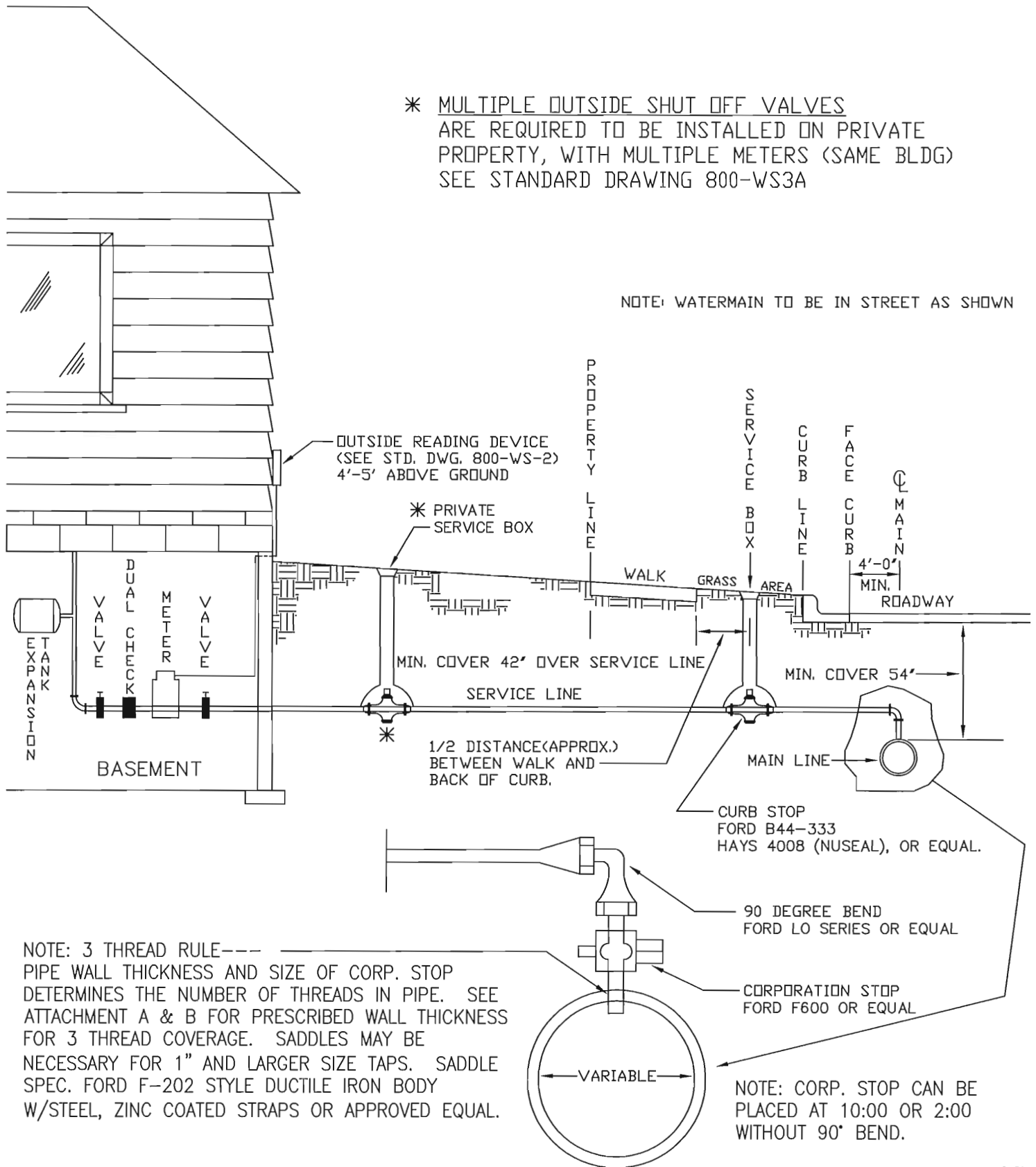
METER		COUPLING TAILPIECE (SPUDS)	
SIZE	LENGTH	LENGTH	THREAD
5/8x3/4"	7 1/2"	2 1/2"	3/4"
F-3/4"	9"	2 1/2"	3/4"
1"	10 3/4"	2 5/8"	1"

FOR SIZES 1 1/2" OR LARGER
REF. #800-WS-5



* MULTIPLE OUTSIDE SHUT OFF VALVES
ARE REQUIRED TO BE INSTALLED ON PRIVATE
PROPERTY, WITH MULTIPLE METERS (SAME BLDG)
SEE STANDARD DRAWING 800-WS3A

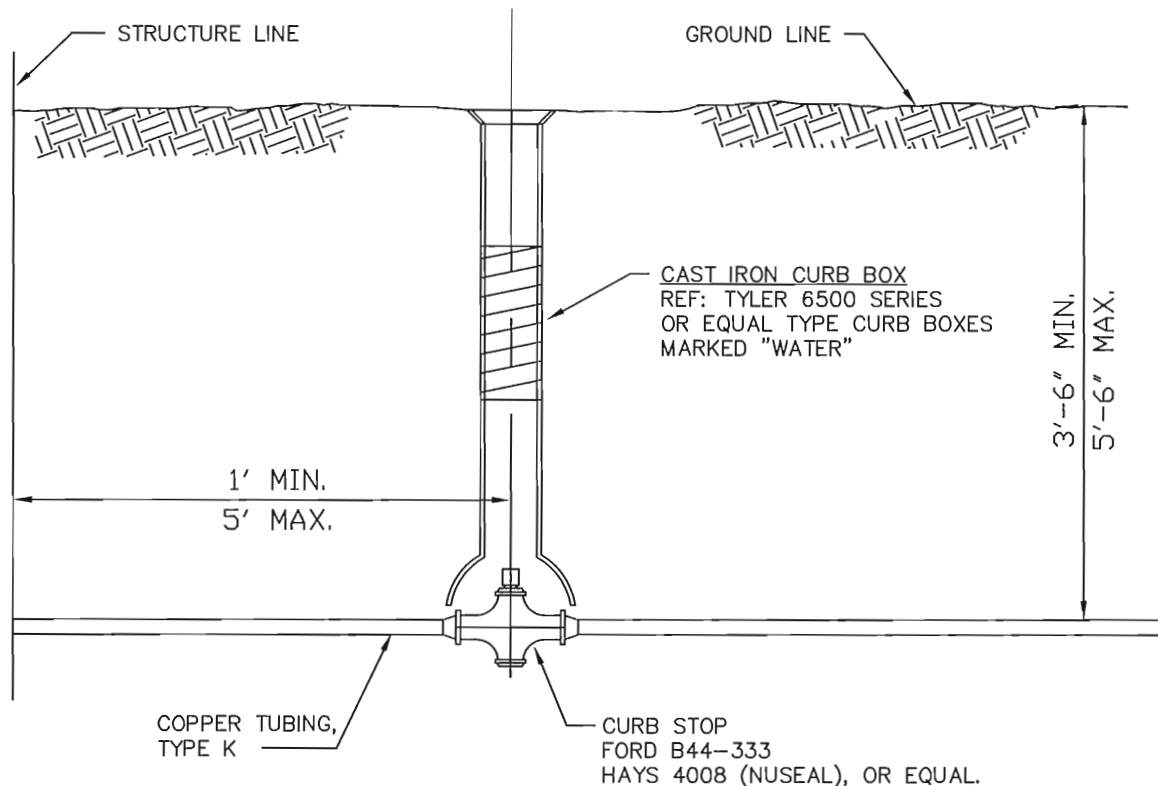
NOTE: WATERMAIN TO BE IN STREET AS SHOWN



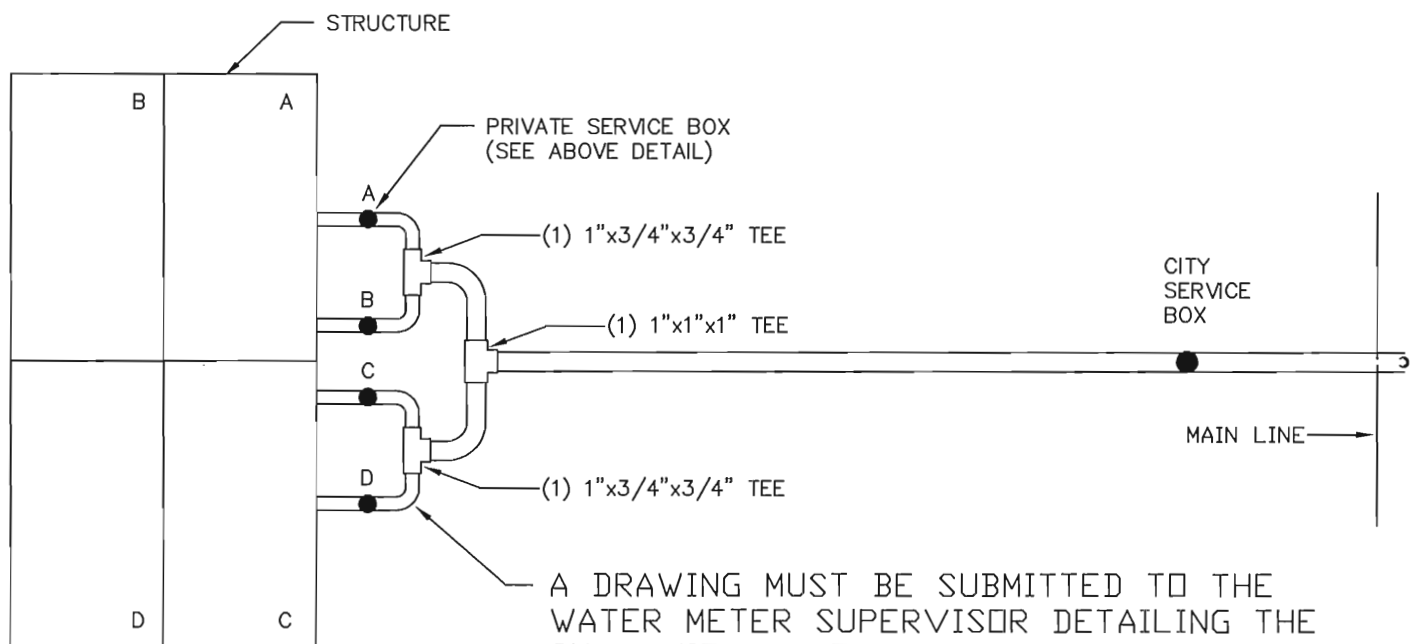
CITY OF NEWARK, OHIO
DIVISION OF ENGINEERING

STANDARD DRAWING 800-WS-3
WATER SERVICE INSTALLATION

6-91
PIPES
REVISED
12-93 KELLEY
6-94 KELLEY
12-94 KELLEY
5-96 KELLEY
7-97 KELLEY
2-98 KELLEY
2-01 KELLEY
9-02 KELLEY
4-06 KELLEY

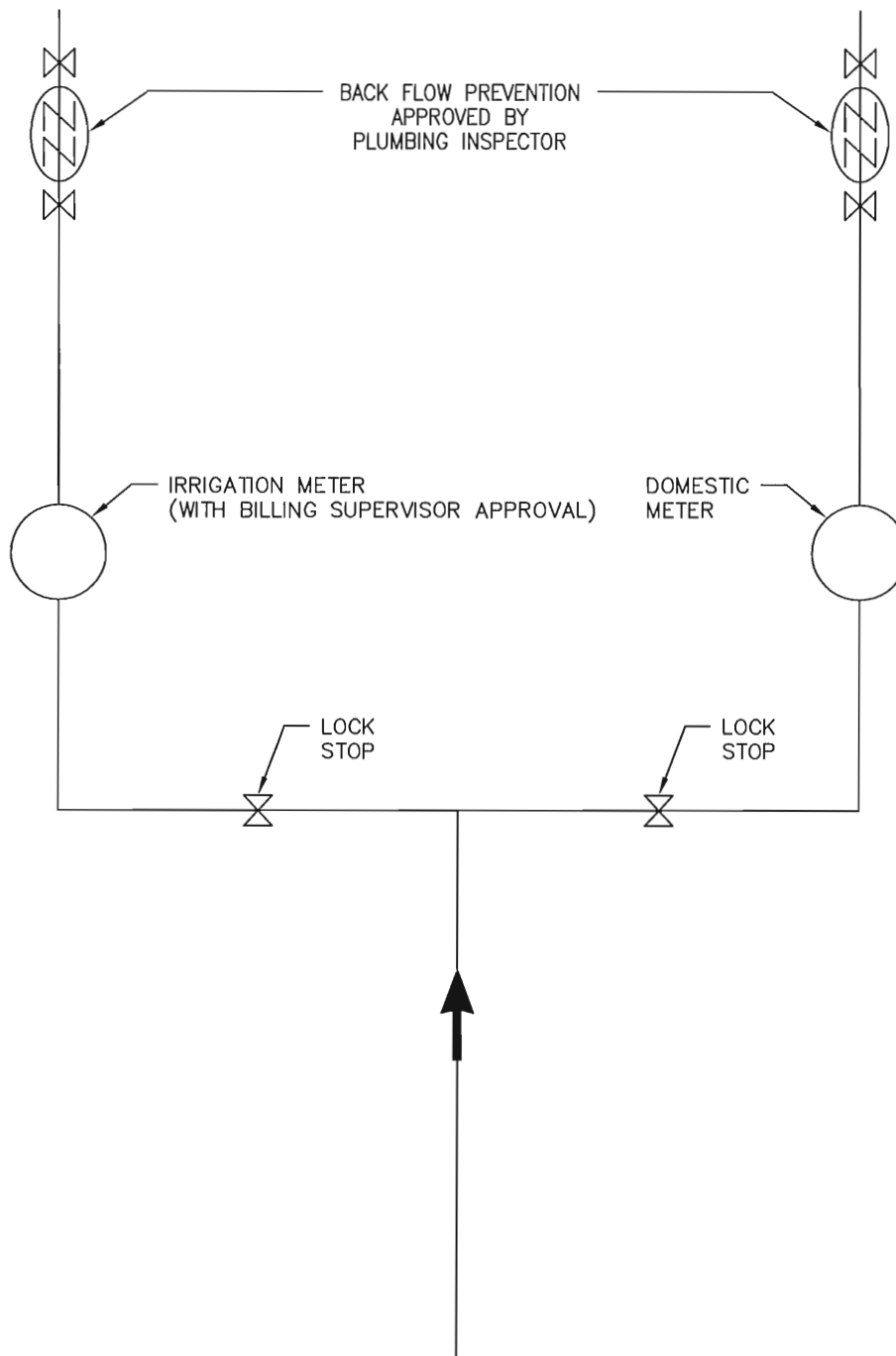


SIDE VIEW

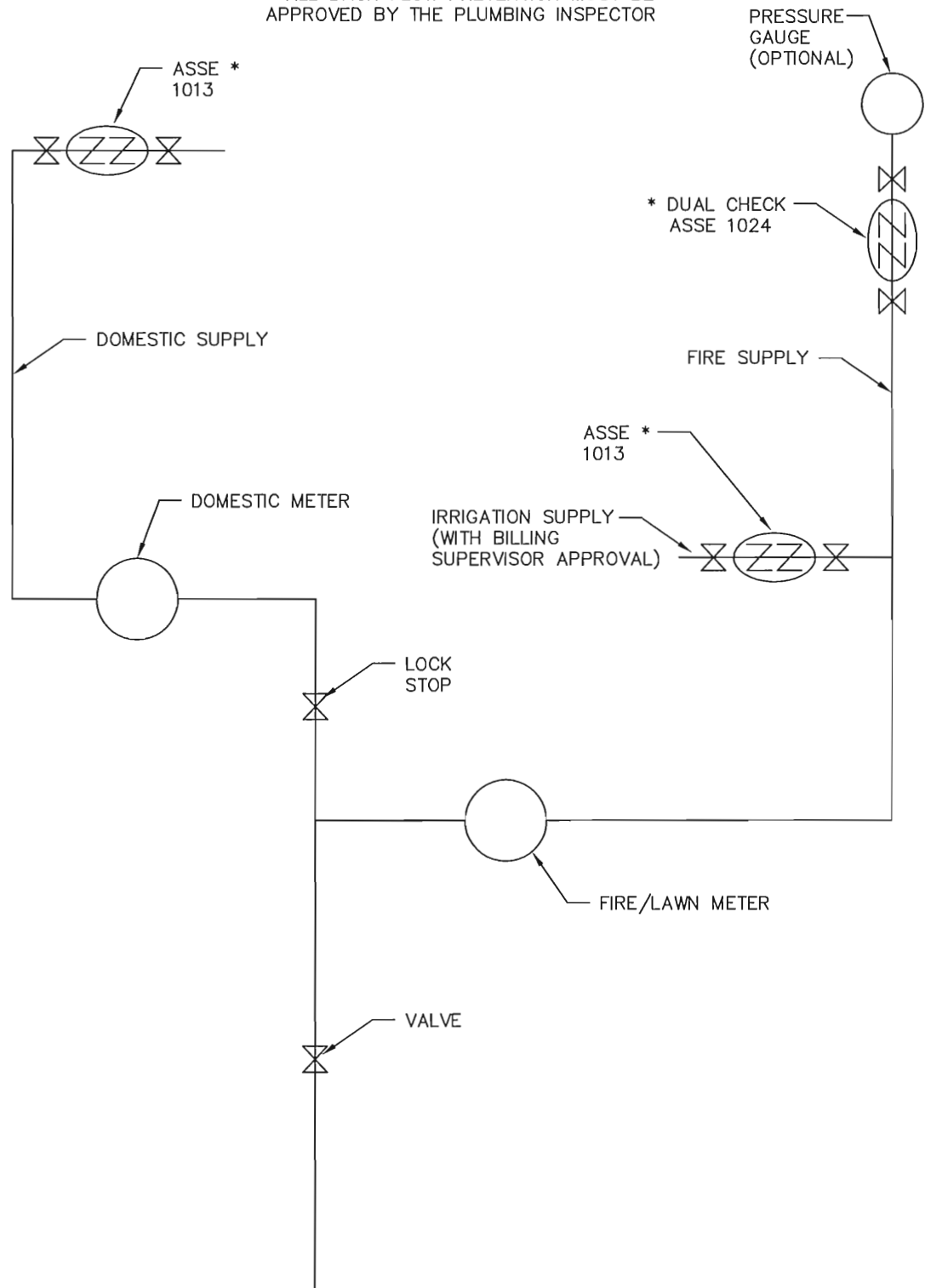


A DRAWING MUST BE SUBMITTED TO THE WATER METER SUPERVISOR DETAILING THE CURB STOP LAYOUT & WHAT AREA(S) ARE SERVED BY EACH STOP BEFORE FINAL APPROVAL WILL BE ISSUED BY THE WATER DEPARTMENT.

TOP VIEW



* ALL BACK FLOW PREVENTION MUST BE APPROVED BY THE PLUMBING INSPECTOR



COMMERCIAL MULTIPLE METERS

CITY OF NEWARK, OHIO
DIVISION OF ENGINEERING

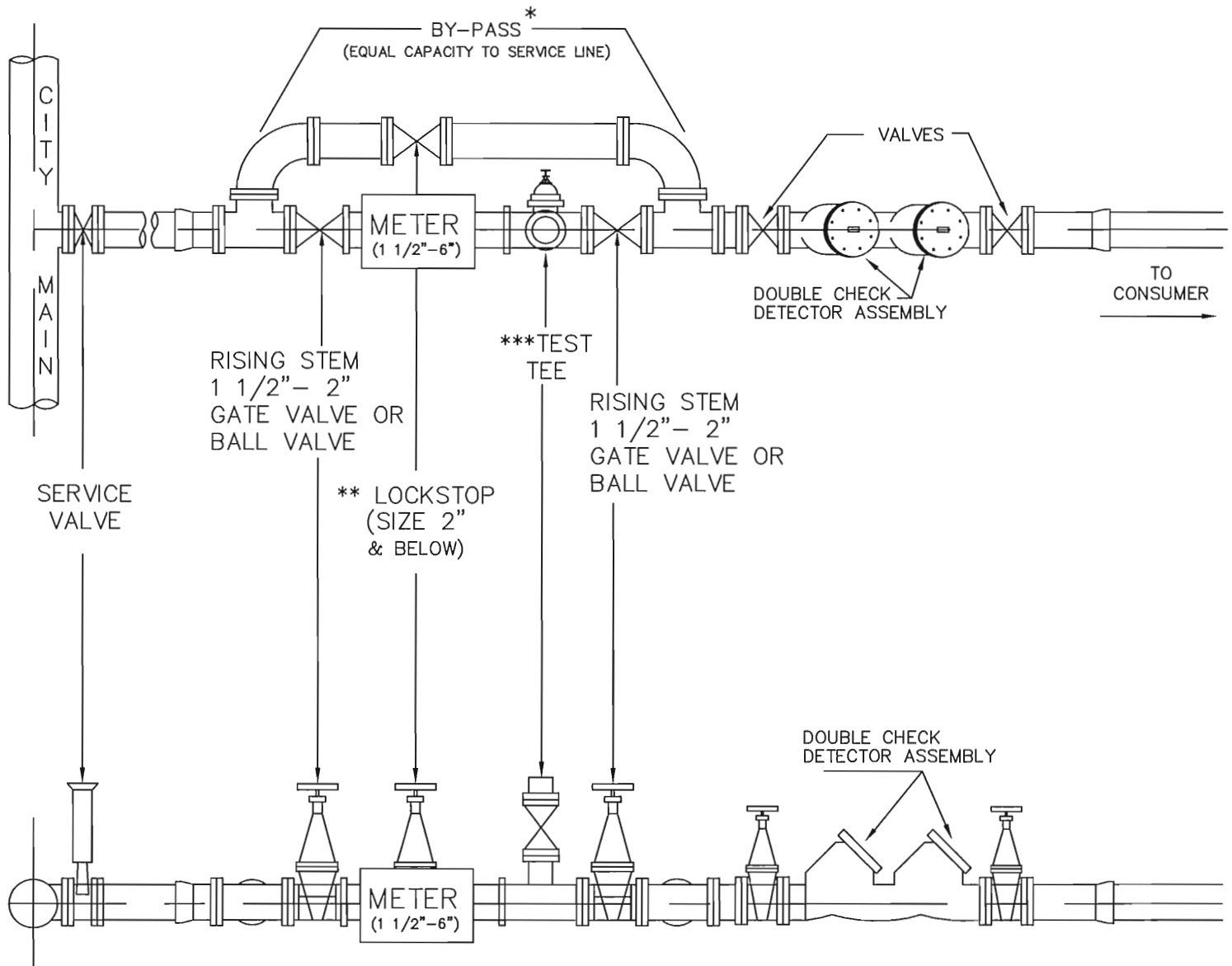
STANDARD DRAWING 800-WS-4A

C.M.M. (Domestic/ Fire/ Irrigation)

4-04 KELLEY
REVISED
01-05 KELLEY
4-06 KELLEY

METER SETTING

(1 1/2"–6" WATER METERS)



NOTES:

* SIZE OF THE BY-PASS LINE MUST MEET EMERGENCY WATER REQUIREMENTS.

** LOCKSTOP MUST BE PURCHASED THROUGH THE NEWARK WATER DEPT. FOR THE BY-PASS VALVE (SIZES 2" AND BELOW).

*** FOR TURBO METERS, SIZES 3" OR LARGER, THE TEST TEE IS TO BE FULL SIZE WITH REDUCING FLANGE TO 2" NIPPLE AND 2" LOCKSTOP (PURCHASED THROUGH THE NEWARK WATER DEPT.). TEST TEE MUST BE LOCATED A MINIMUM OF 2 PIPE DIAMETERS DOWNSTREAM OF THE TURBO-METER.

SIZE	COMPANION FLANGE	METER TYPE		
		DISPLACEMENT	COMPOUND	TURBINE
1 1/2"	1 1/8"	13"	---	---
2"	1 1/4"	17"	17"	10"
3"	1 1/4"	---	17"	12"
4"	1 5/16"	---	24"	14"
6"	1 7/16"	---	24"	18"
TEST TEE		REQUIRED	NOT REQUIRED	REQUIRED

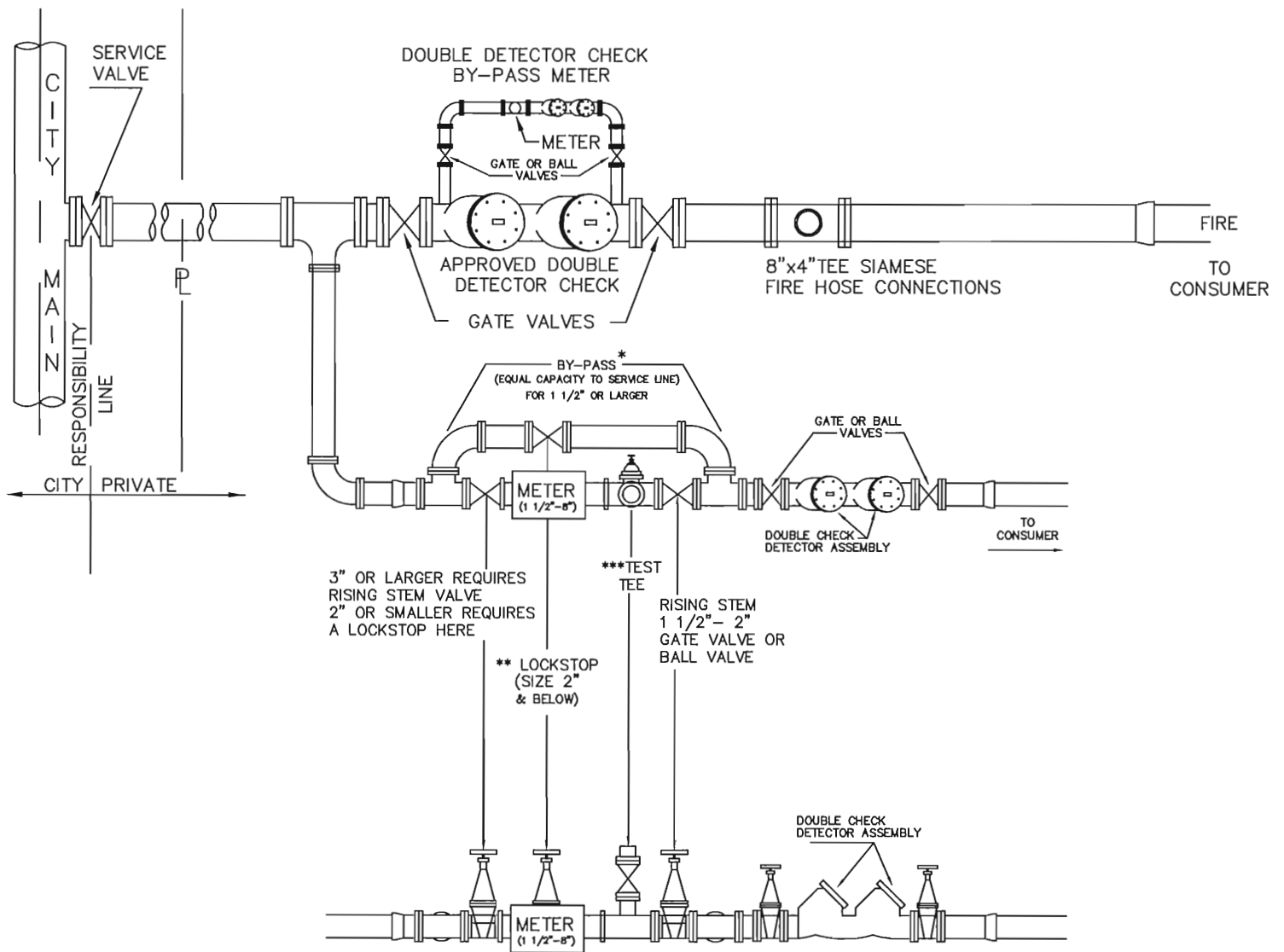
CITY OF NEWARK, OHIO
DIVISION OF ENGINEERING

STANDARD DRAWING 800-WS-5

METER SETTING-1 1/2"–6"

1-94
KELLEY

REVISED
12-94 KELLEY
5-96 KELLEY
2-98 KELLEY
10-00 KELLEY
4-06 KELLEY
2-07 KELLEY



NOTES:

* SIZE OF THE BY-PASS LINE MUST MEET EMERGENCY WATER REQUIREMENTS.

** LOCKSTOP MUST BE PURCHASED THROUGH THE NEWARK WATER DEPT. FOR THE BY-PASS VALVE (SIZES 2" AND BELOW).

*** FOR METERS, SIZES 3" OR LARGER, THE TEST TEE IS TO BE FULL SIZE WITH REDUCING FLANGE TO 2" NIPPLE AND 2" LOCKSTOP (PURCHASED THROUGH THE NEWARK WATER DEPT.). TEST TEE MUST BE LOCATED A MINIMUM OF 2 PIPE DIAMETERS DOWNSTREAM OF THE TURBO-METER.

SIZE	COMPANION FLANGE	METER TYPE		
		DISPLACEMENT	COMPOUND	TURBINE
1 1/2"	1 1/8"	13"	---	---
2"	1 1/4"	17"	17"	10"
3"	1 1/4"	---	17"	12"
4"	1 5/16"	---	24"	14"
6"	1 7/16"	---	24"	18"
TEST TEE		REQUIRED	NOT REQUIRED	REQUIRED

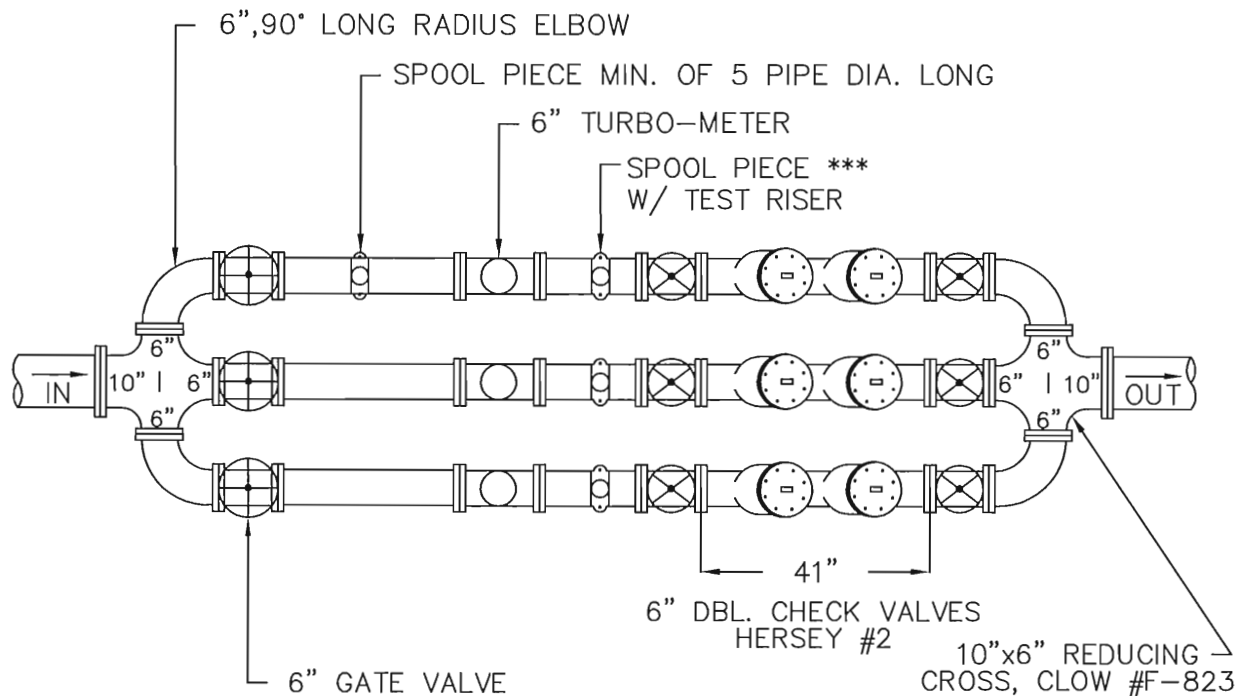
8-2000
KELLEY

CITY OF NEWARK, OHIO
DIVISION OF ENGINEERING

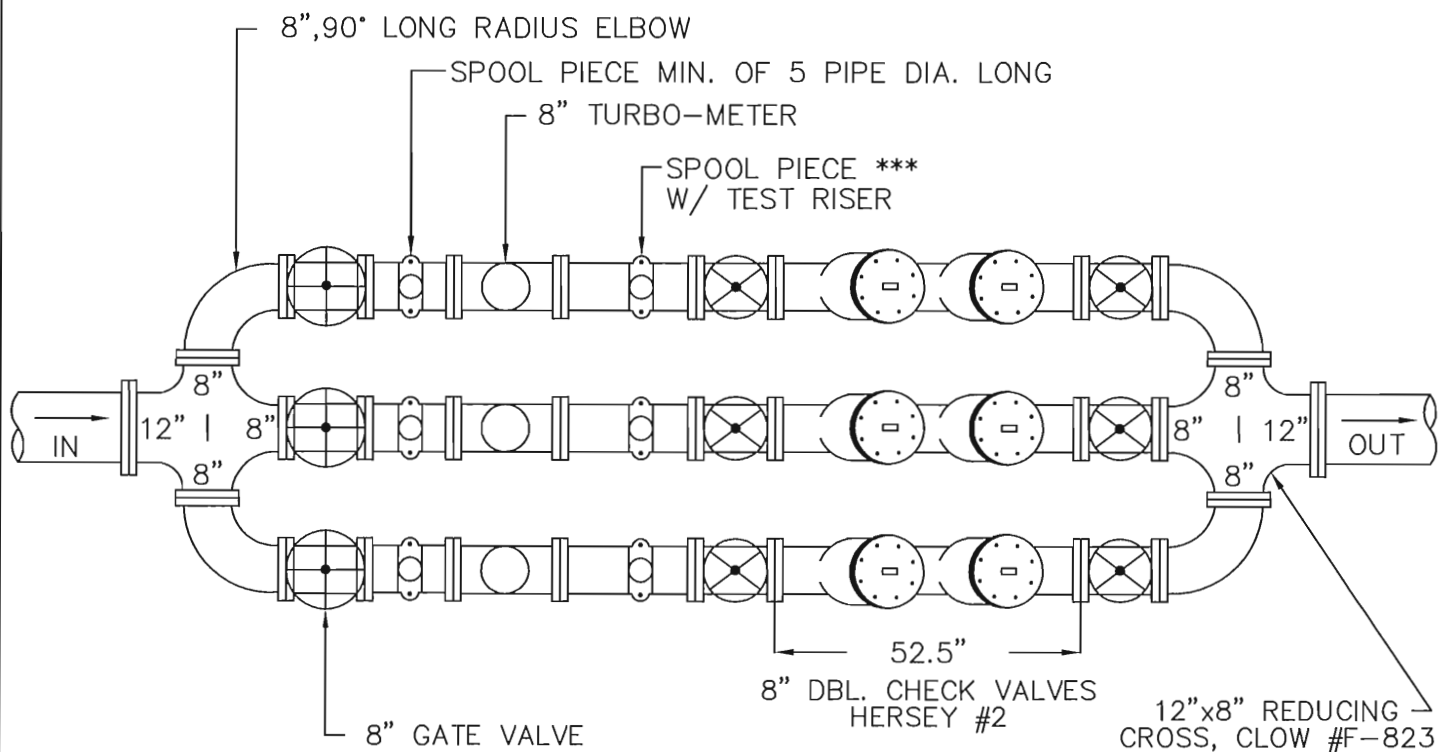
STANDARD DRAWING 800-WS-5A

DUAL METER SETTING

REVISED
10-00 KELLEY
11-00 KELLEY
4-06 KELLEY
2-07 KELLEY



*** TEST TEE TO BE FULL SIZE WITH REDUCING FLANGE TO 2" NIPPLE AND 2" LOCKSTOP (PURCHASED THRU THE NEWARK WATER DEPT.). TEST TEE MUST BE LOCATED A MINIMUM OF 2 PIPE DIAMETERS DOWNSTREAM OF THE TURBO-METER.



5-96 KELLEY

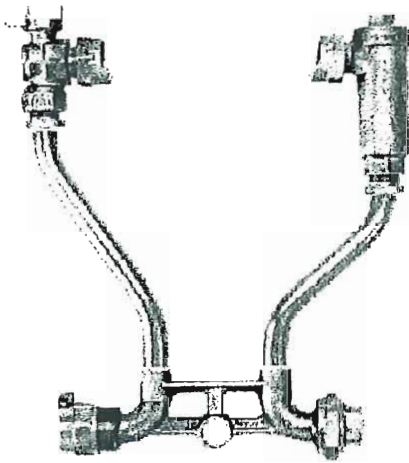
CITY OF NEWARK, OHIO
DIVISION OF ENGINEERING

STANDARD DRAWING 800-WS-5B

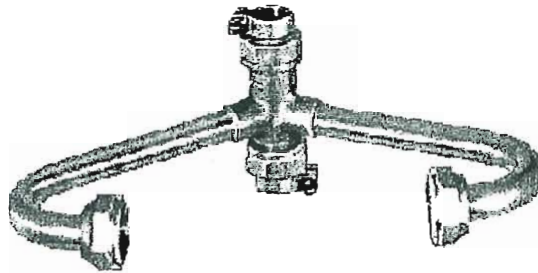
METER MANIFOLDS

REVISED
2-98 KELLEY
4-08 KELLEY

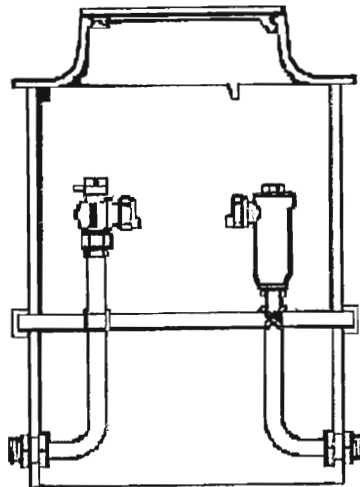
METER PIT FOR 1" OR SMALLER METERS



METER PIT SETTINGS

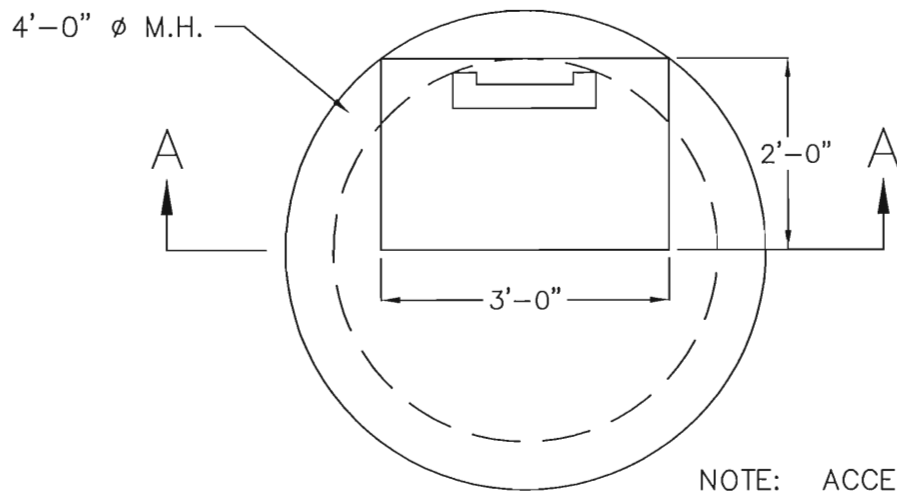


COPPERHORN



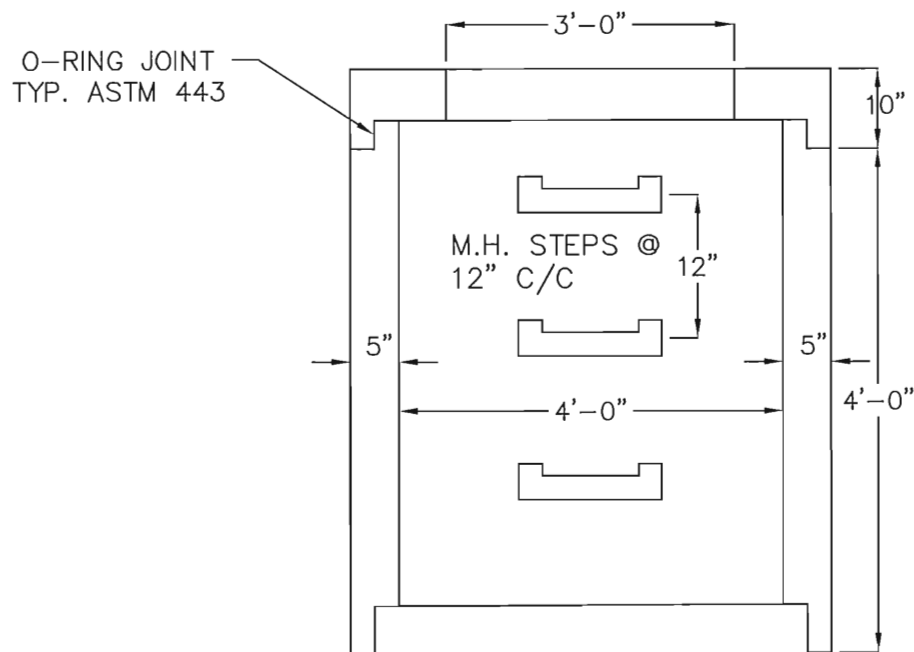
PIT 20" IN DIAMETER/OVER 42" DEEP
33" RISERS WITH A 15" LID (AND 1 3/4" HOLE FOR TOUCH READ)

48" METER PIT FOR 1 1/2" OR 2" METERS



NOTE: ACCESS DOOR / LID SPEC.
BILCO TYPE K OR J OR PCM
OR APPROVED EQUAL
APPROVED BY THE WATER METER DEPT.

PLAN

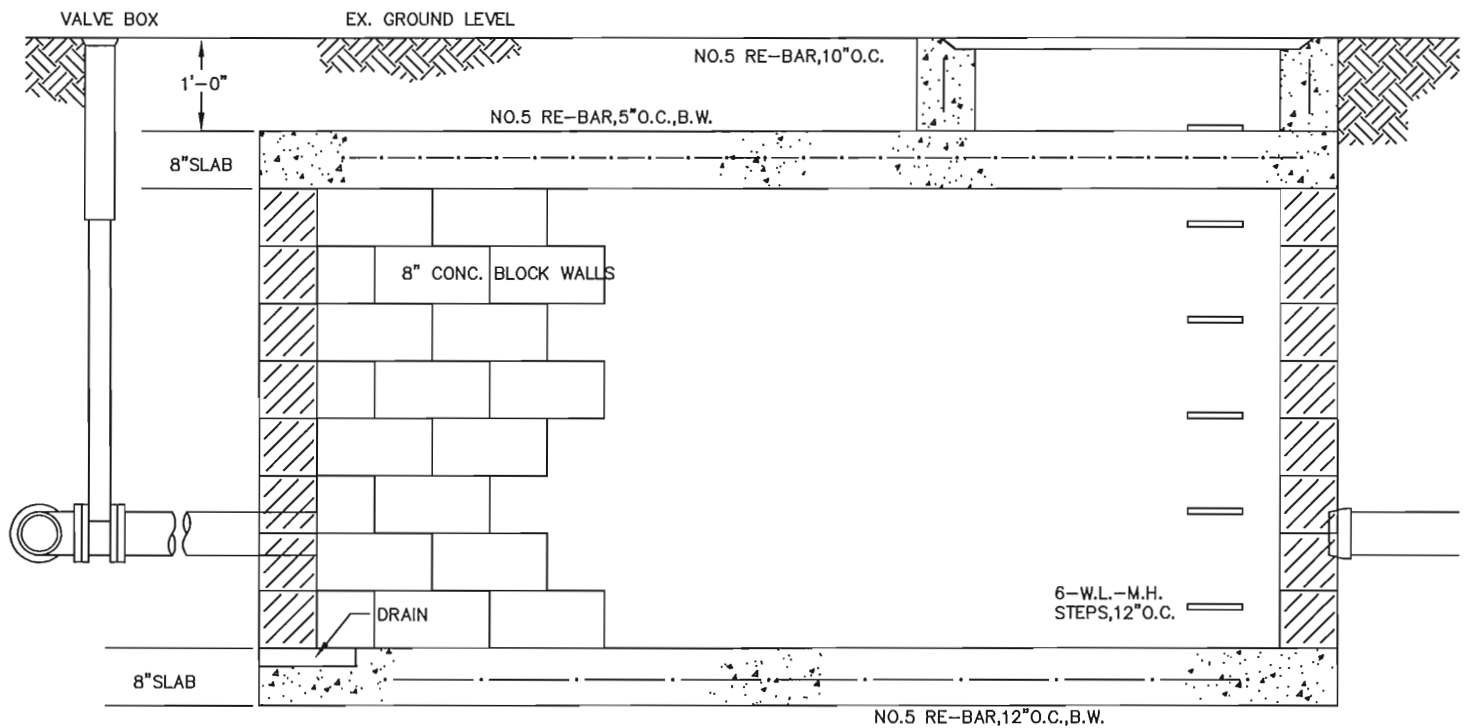
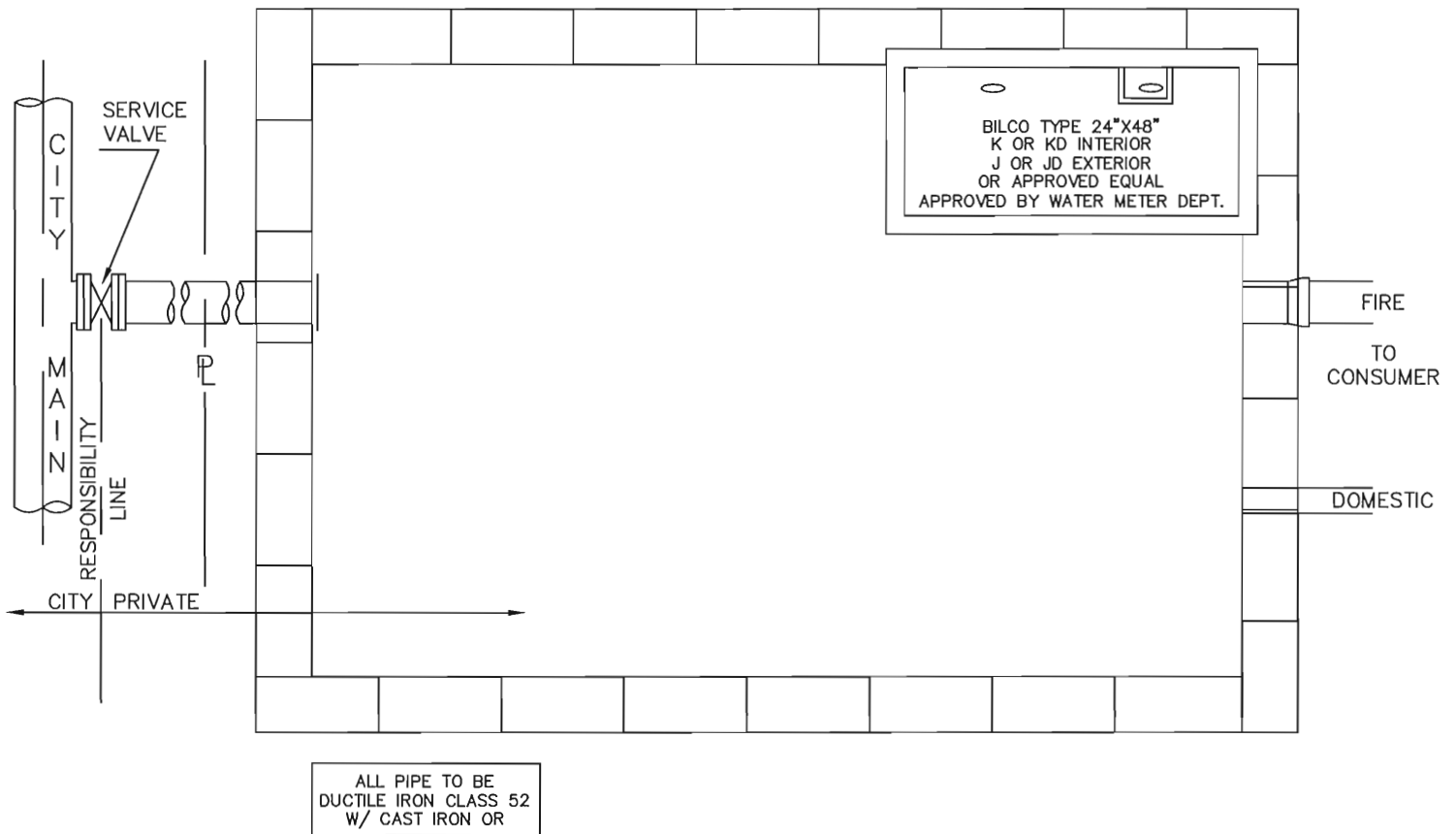


SEE NOTES ON STANDARD DRAWING 800-WS-5

CITY OF NEWARK, OHIO
DIVISION OF ENGINEERING

STANDARD DRAWING 800-WS-6A
48" METER PIT For 1 1/2" or 2" METERS

2/98
KELLEY
REVISED
01-05 KELLEY
4-06 KELLEY
2-07 KELLEY

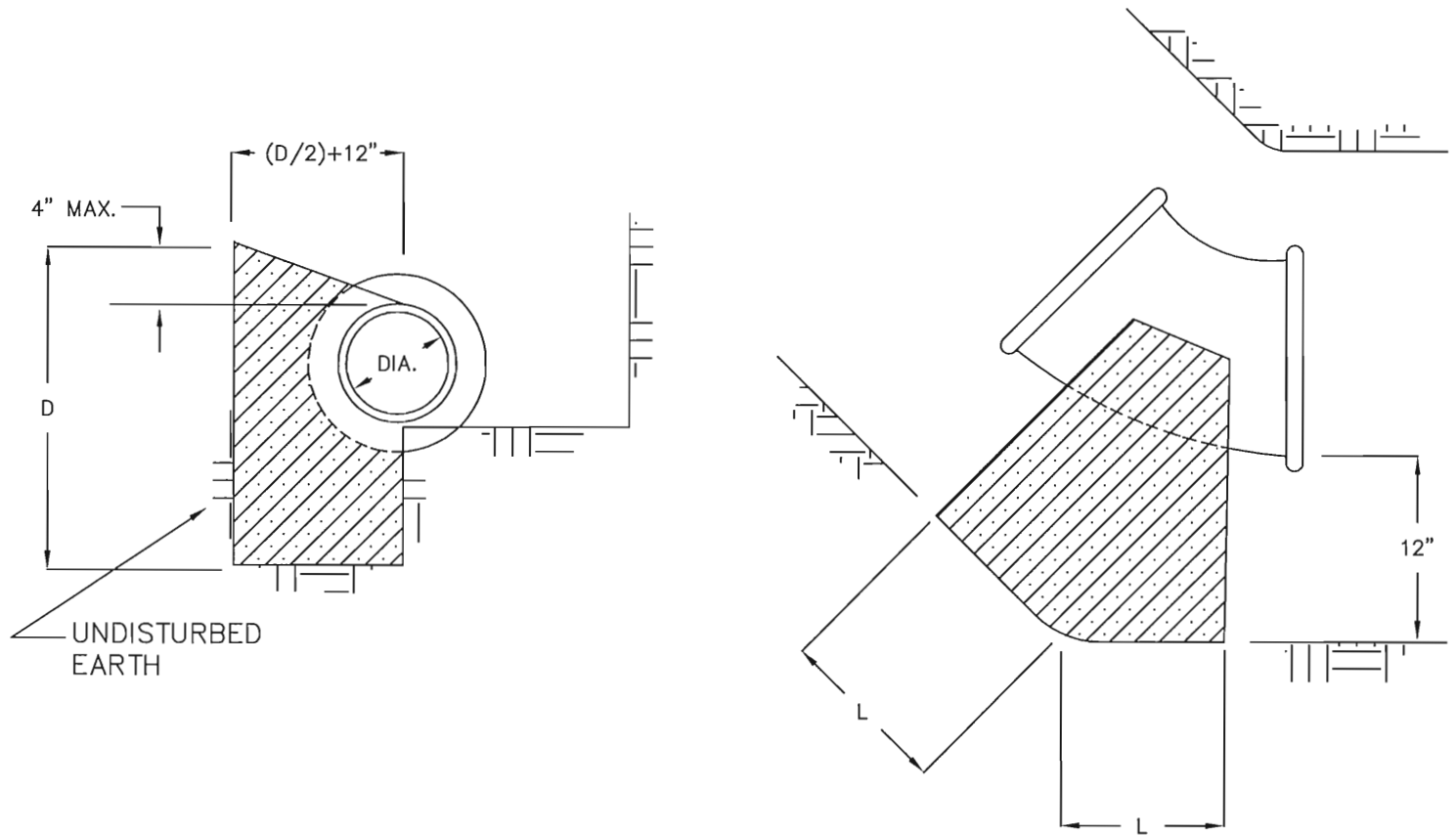


- * REF. DRAWING 800-WS-5A FOR DUAL METER SETTINGS (DOMESTIC & FIRE)
- * REF. DRAWING 800-WS-5 FOR STANDARD METER SETTING (1 1/2' & ABOVE)

CITY OF NEWARK, OHIO
DIVISION OF ENGINEERING

STANDARD DRAWING 800-WS-6B
METER PIT-DUAL METER SETTING

5-06
KELLEY
REVISED
5-06 KELLEY



CLASS "F" CONCRETE PER 499 REQUIRED UNLESS OTHERWISE APPROVED.
 NOTE: WRAP PIPE/FITTINGS WITH PLASTIC BEFORE POURING CONCRETE.
 NOTE: NO QUICKCRETE – NO MIXING IN THE HOLE.

DIA. OF PIPE	DEGREE OF BEND							
	11 1/4		22 1/2		45		90	
	L	D	L	D	L	D	L	D
6" OR LESS	4	6	6	8	12	8	22	8
8"	6	8	9	10	12	14	26	12
10"	7	10	11	12	17	16	30	16
12"	7	14	14	14	21	18	35	20
16"	11	16	17	20	31	22	52	24

DIMENSIONS ARE IN INCHES

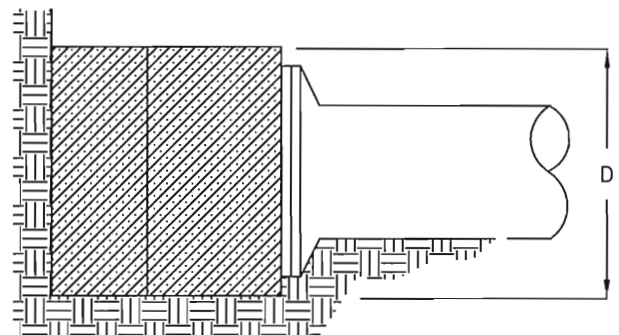
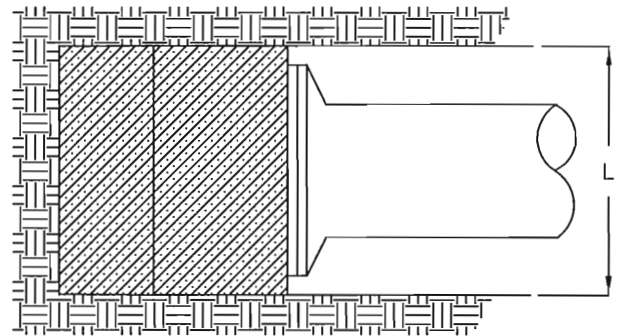
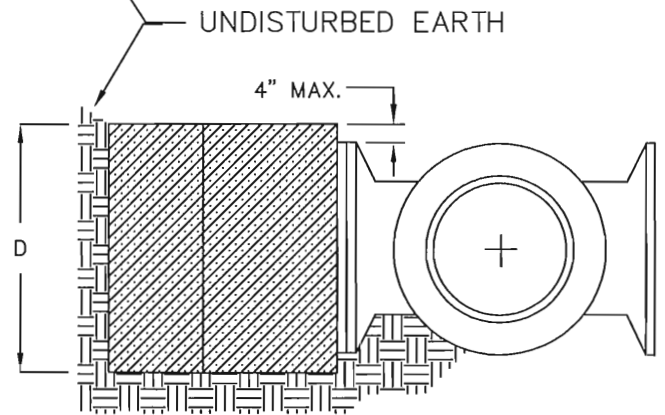
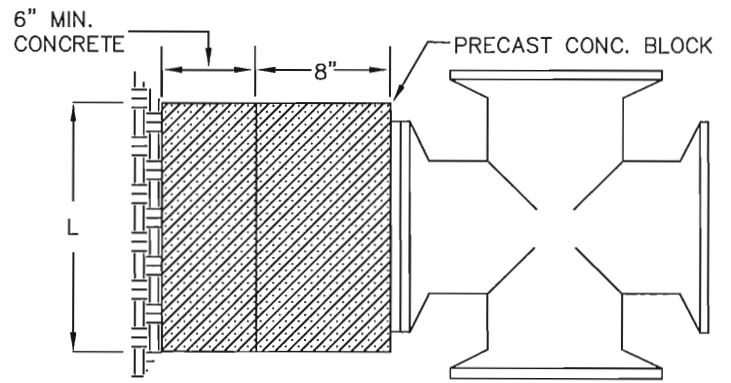
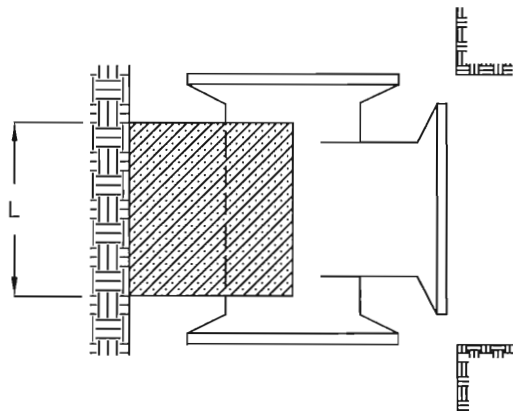
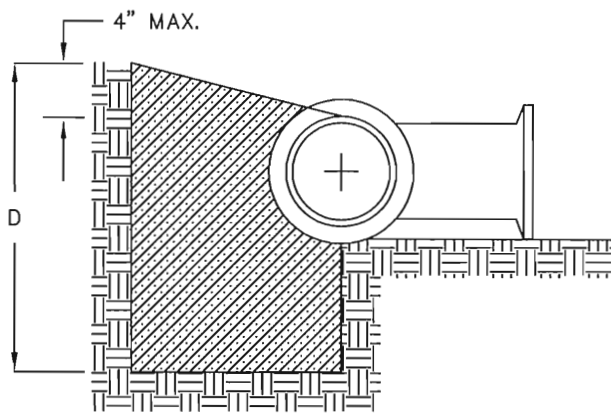
BLOCKING DESIGNED FOR 2500 PSF SOIL BEARING

NOTE: FOR SIZES GREATER THAN 16" CONTACT CITY ENGINEER.

CITY OF NEWARK, OHIO
 DIVISION OF ENGINEERING

STANDARD DRAWING 800-3
 BLOCKING DETAILS – BENDS

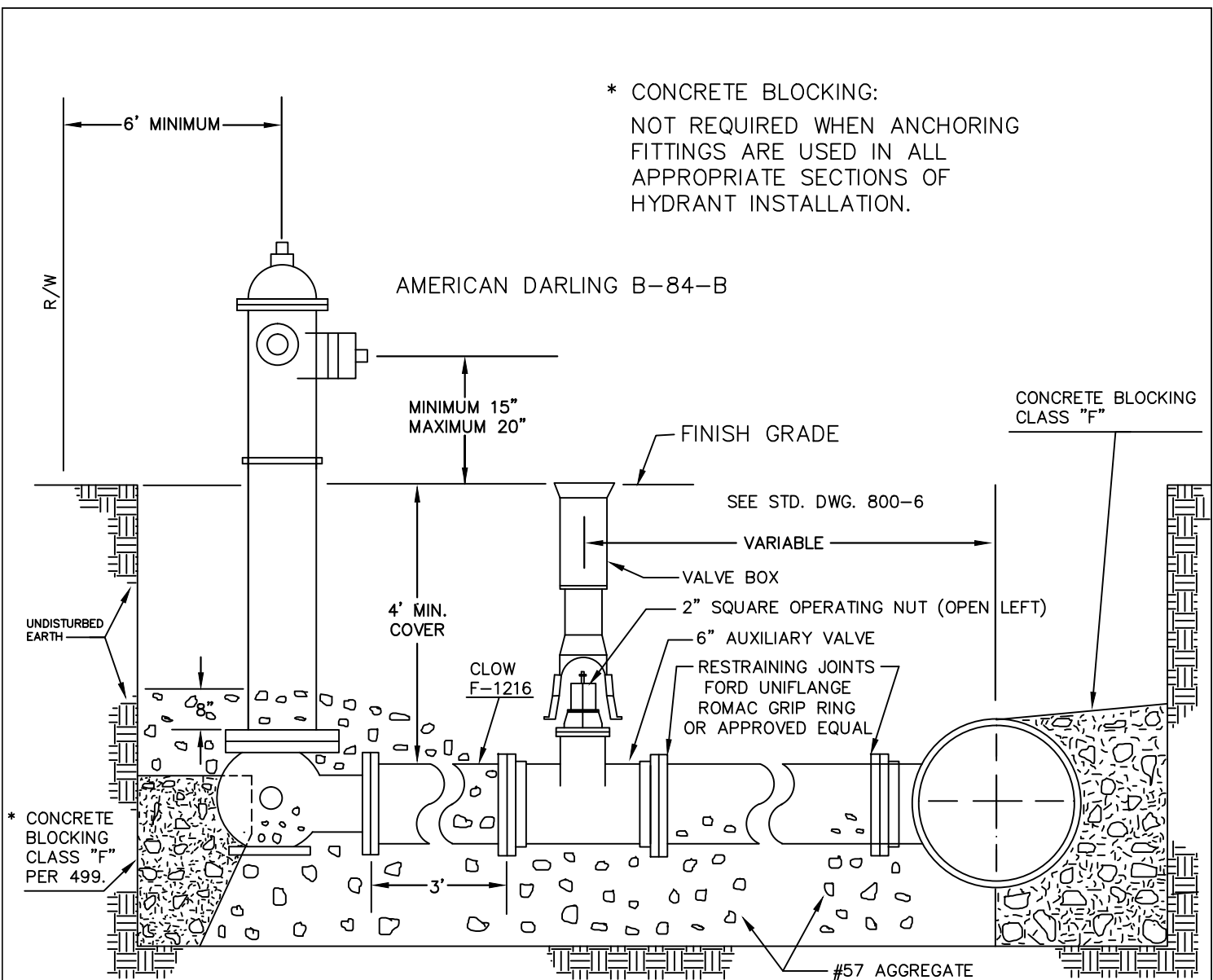
6-93
 KELLEY
 REVISED
 5-96 KELLEY



RUN	BRANCH									
	6"		8"		10"		12"		16"	
	L	D	L	D	L	D	L	D	L	D
6"	12*	18*								
8"	15	18	18*	21*						
10"	21	21	21	24	24*	24*				
12"	21	24	24	24	30	30	36*	36*		
16"	24	30	30	30	36	36	39	39	42*	42*

DIMENSIONS ARE IN INCHES. USE ASTERISKED VALUES FOR PLUGS(*).

CLASS "F" CONCRETE PER 499

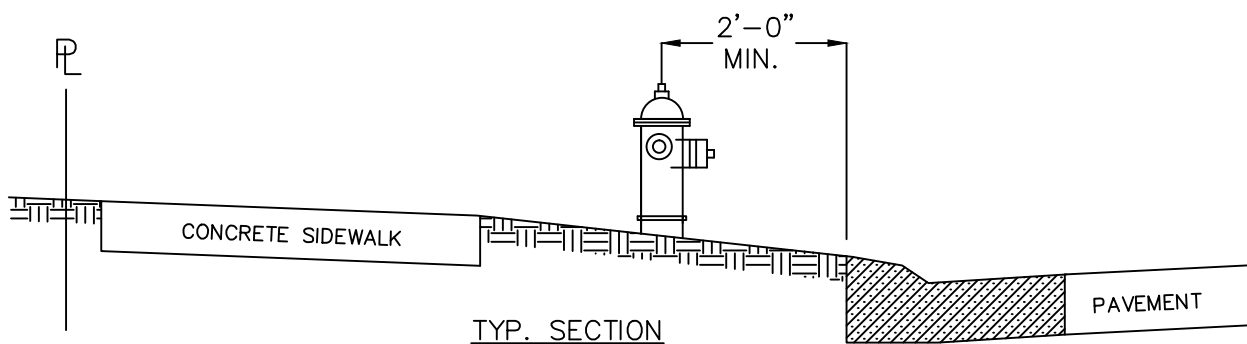


NOTE: CARE SHALL BE EXERCISED TO KEEP HYDRANT DRAIN OPENING FREE TO OPERATE.

TYPE OF HYDRANT SHALL MEET THE REQUIREMENTS OF SPECS. 803.

PIPE SECTION BETWEEN VALVE & HYDRANT SHALL BE ONE ANCHORING
PIPE - CLOW F-1216 OR APPROVED EQUAL-36" MINIMUM.

HYDRANT TO BE PAINTED "CHROME YELLOW"



CITY OF NEWARK, OHIO
DIVISION OF ENGINEERING

STANDARD DRAWING 800-5
HYDRANT DETAIL

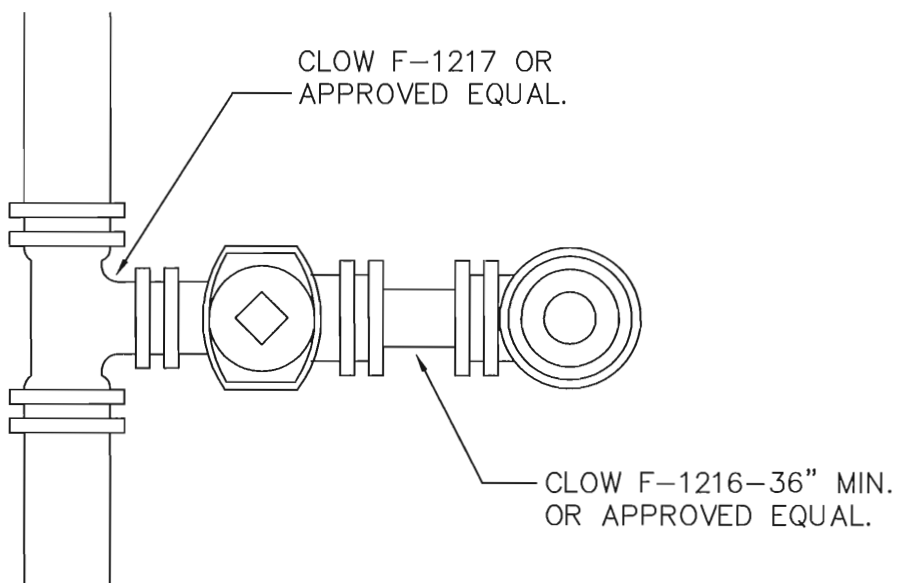
9-91
PIPES
REVISED
5-96 KELLEY
2-96 KELLEY
2-06 KELLEY
3-12 KELLEY
11-12 KELLEY
7-18 KELLEY

NOTE:

ALL VALVES TO HAVE
2" SQUARE OPERATING NUT
NON-RISING STEM, OPEN LEFT.

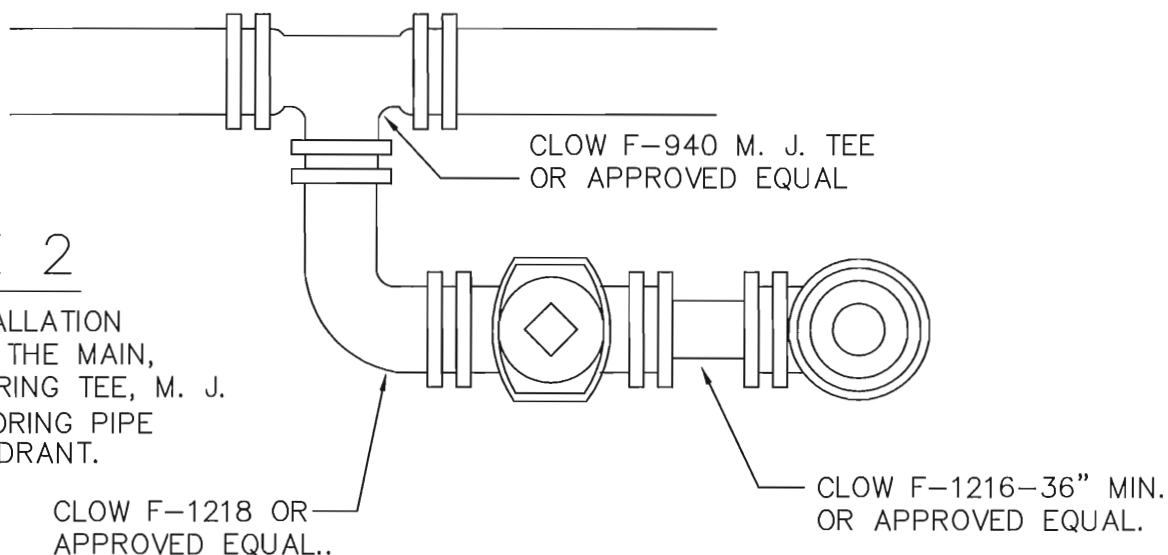
TYPE 1

TYPICAL INSTALLATION
PERPENDICULAR TO THE MAIN
USING ANCHORING TEE, M. J.
VALVE, ANCHORING COUPLING
AND M. J. HYDRANT.



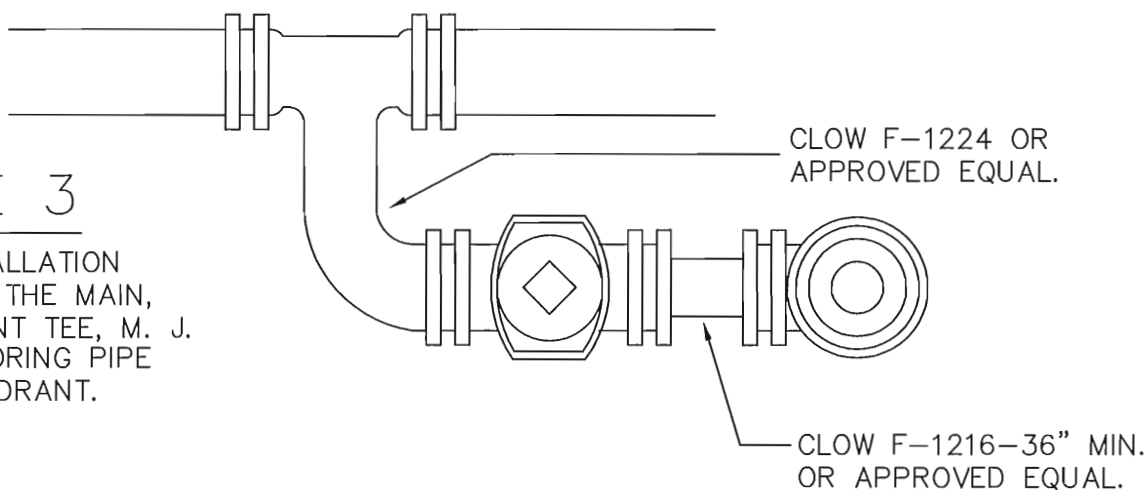
TYPE 2

TYPICAL INSTALLATION
PARALLEL TO THE MAIN,
USING ANCHORING TEE, M. J.
VALVE, ANCHORING PIPE
AND M. J. HYDRANT.



TYPE 3

TYPICAL INSTALLATION
PARALLEL TO THE MAIN,
USING HYDRANT TEE, M. J.
VALVE, ANCHORING PIPE
AND M. J. HYDRANT.



FOR DETAILS, SEE STANDARD DRAWING 800-5.

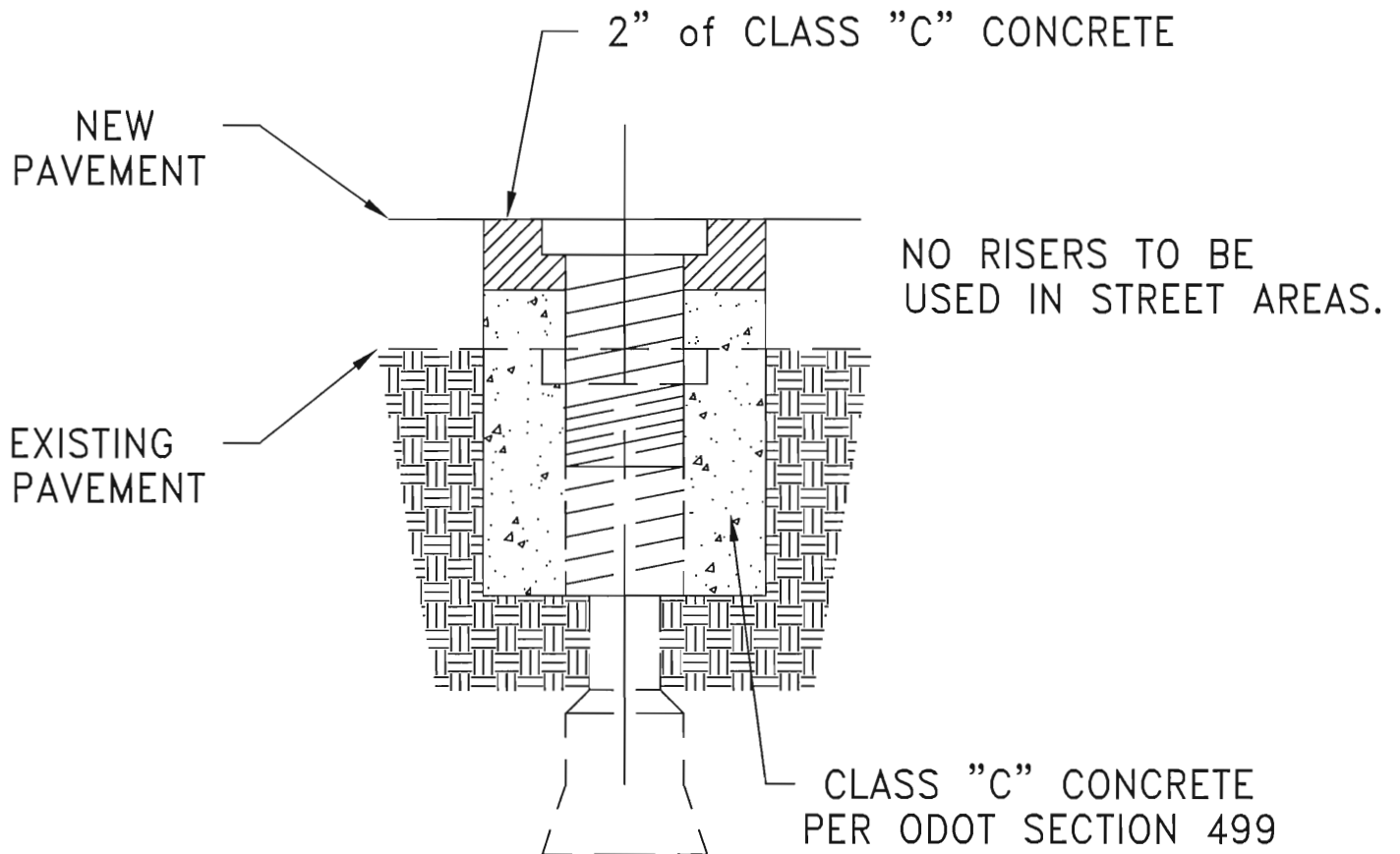
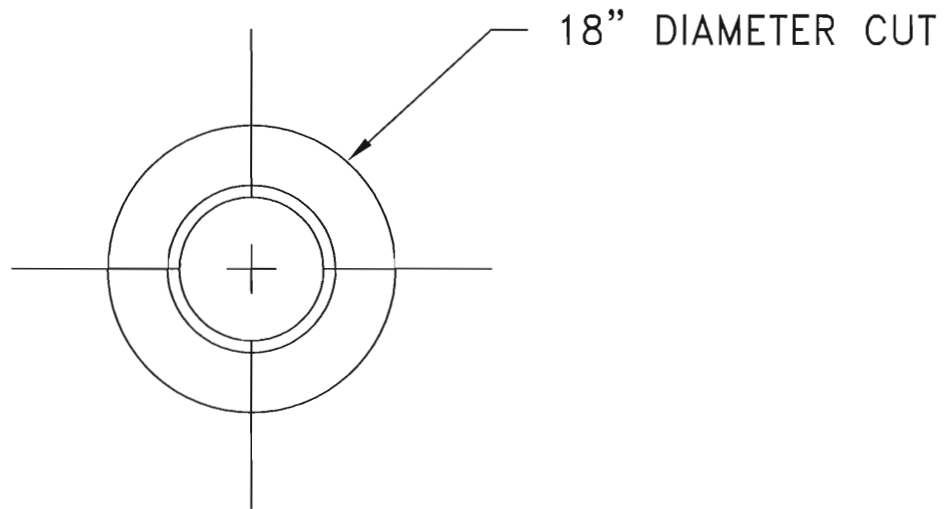
CITY OF NEWARK, OHIO
DIVISION OF ENGINEERING

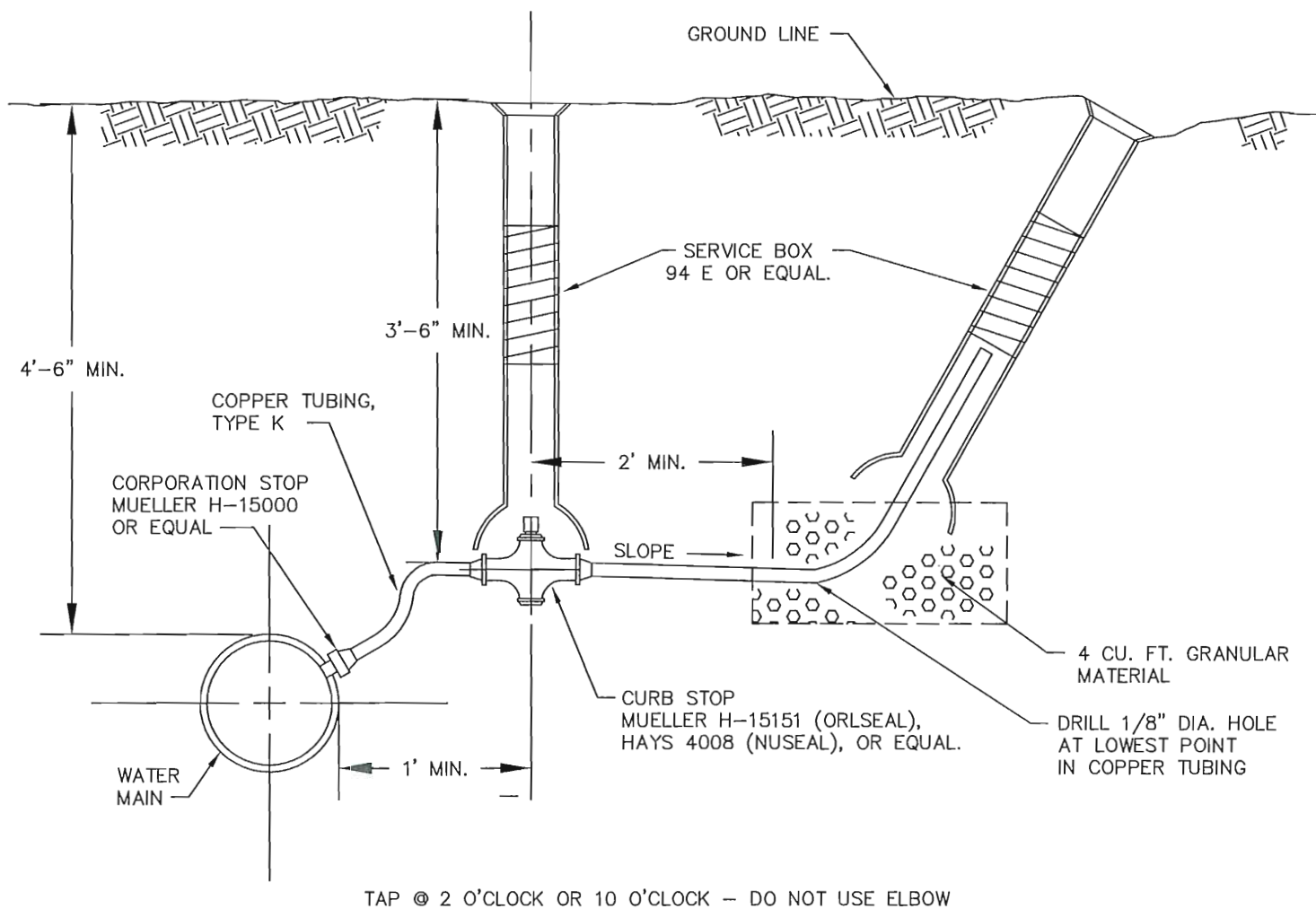
STANDARD DRAWING 800-6

HYDRANT SETTINGS

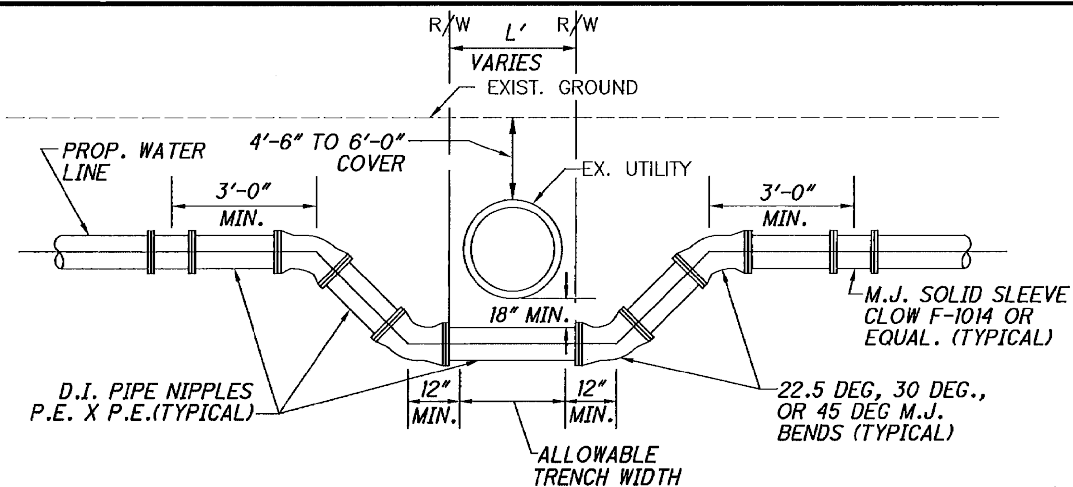
8-91
PIPES

REVISED
5-96 KELLEY
2-98 KELLEY





NOTE: THIS TYPE BLOW-OFF IS TO BE USED WHEN A FIRE HYDRANT IS NOT INSTALLED AT END OF LINE.



NOTES:

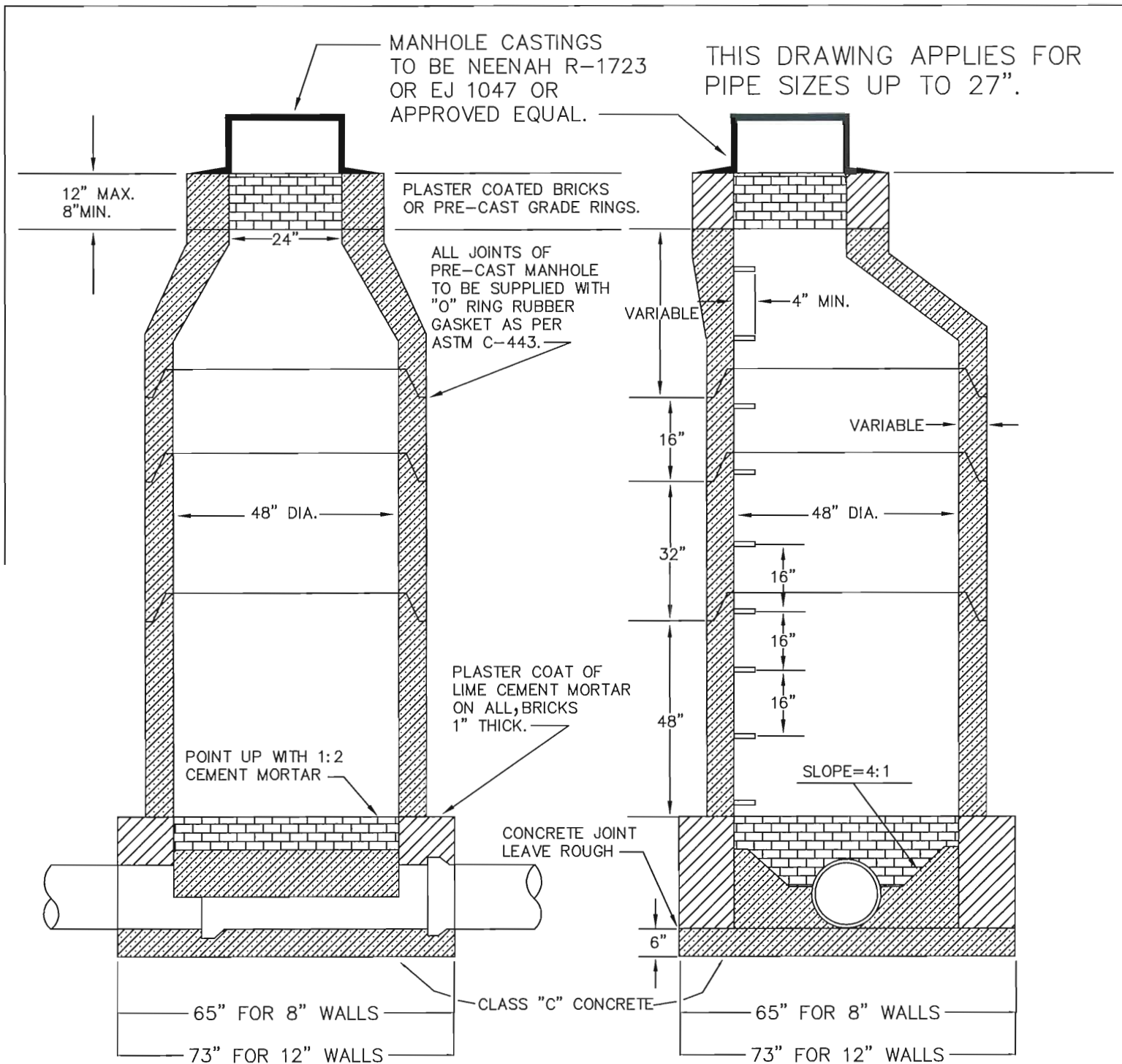
1. TIME AND DURATION OF SHUT DOWN SHALL BE DETERMINED BY THE DIRECTOR OF UTILITIES.
2. THE CONTRACTOR SHALL NOTIFY ALL WATER CUSTOMERS AFFECTED BY THE PROPOSED WORK AT LEAST 24 HOURS IN ADVANCE OF SHUT DOWN.
3. ALL BENDS SHALL BE SECURED BY RETAINING GLANDS, RODDING OR OTHER METHODS AS APPROVED BY THE ENGINEER TO RESTORE MAIN TO SERVICE AS SOON AS POSSIBLE. CONCRETE BACKING SHALL THEN BE PROVIDED IN ACCORDANCE WITH STANDARD DRAWING 800 - 3.
4. THE RELOCATED LINES SHALL BE LAID TO THE NEW LINE AND GRADE, TESTED AND DISINFECTED PRIOR TO SHUT DOWN OF EXISTING MAIN AND CONNECTION OF THE RELOCATED LINES TO THE EXISTING MAIN.
5. ALL WATER LINES SHALL BE DISINFECTED BY SWABBING WITH A 5 PERCENT HYPOCHLORITE SOLUTION IN ACCORDANCE WITH THE APPLICABLE SECTIONS OF A.W.W.A. C-601.

WATERLINE LOWERING DETAIL

7-18 KELLEY
REVISED

CITY OF NEWARK, OHIO
DIVISION OF ENGINEERING

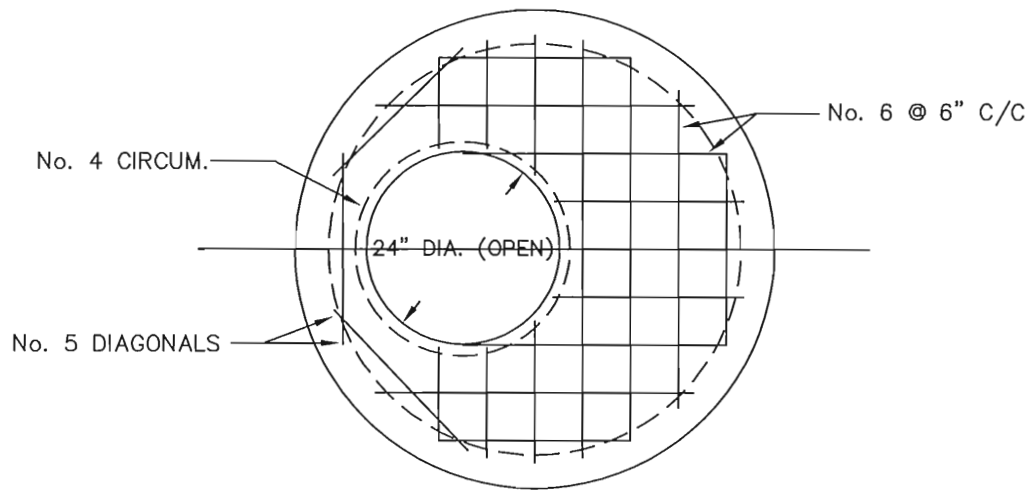
STANDARD DRAWING 800-9
WATERLINE LOWERING DETAIL



NOTE: ALL MANHOLES SHALL BE CONSTRUCTED TO THE ELEVATION OF THE PROPOSED STREET GRADE OR TO THE PRESENT GROUND ELEVATION, WHICHEVER IS HIGHER, UNLESS OTHERWISE ORDERED.

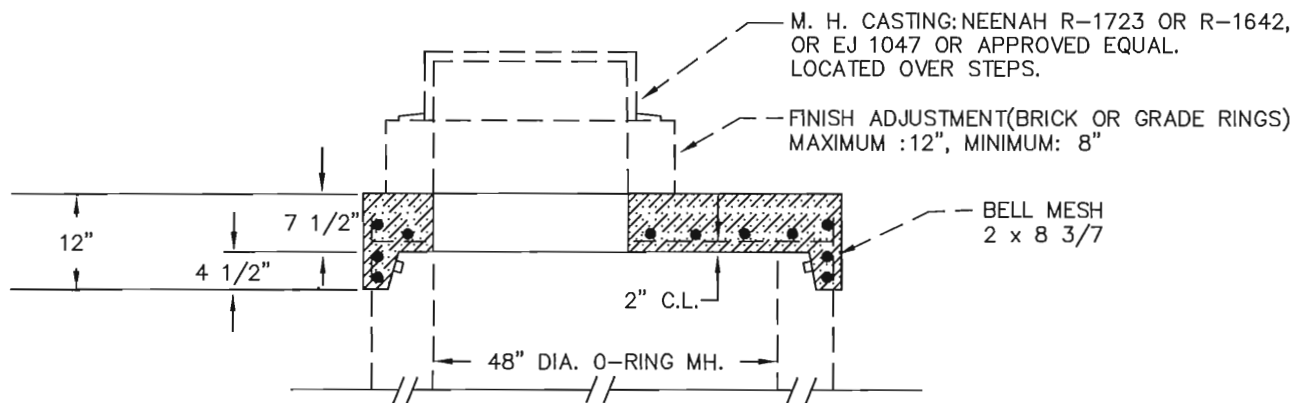
MANHOLE BARREL SECTIONS CAN BE MADE IN 16", 32", 48" & 64" LAYING LENGTHS TO SUIT FIELD CONDITIONS. THESE SECTIONS SHALL BE USED IN SUCH COMBINATIONS AS WILL BE NECESSARY TO FIT EACH LOCATION.

MANHOLE STEPS TO BE NEENAH CAST IRON CAT. NO. R-1980-E OR FORGED ALUMINUM ALLOY PER ASTM B221 OR REINFORCED PROPYLENE PLASTIC, PER 711.31 ALL MEETING MINIMUM O.S.H.A. REQUIREMENTS.

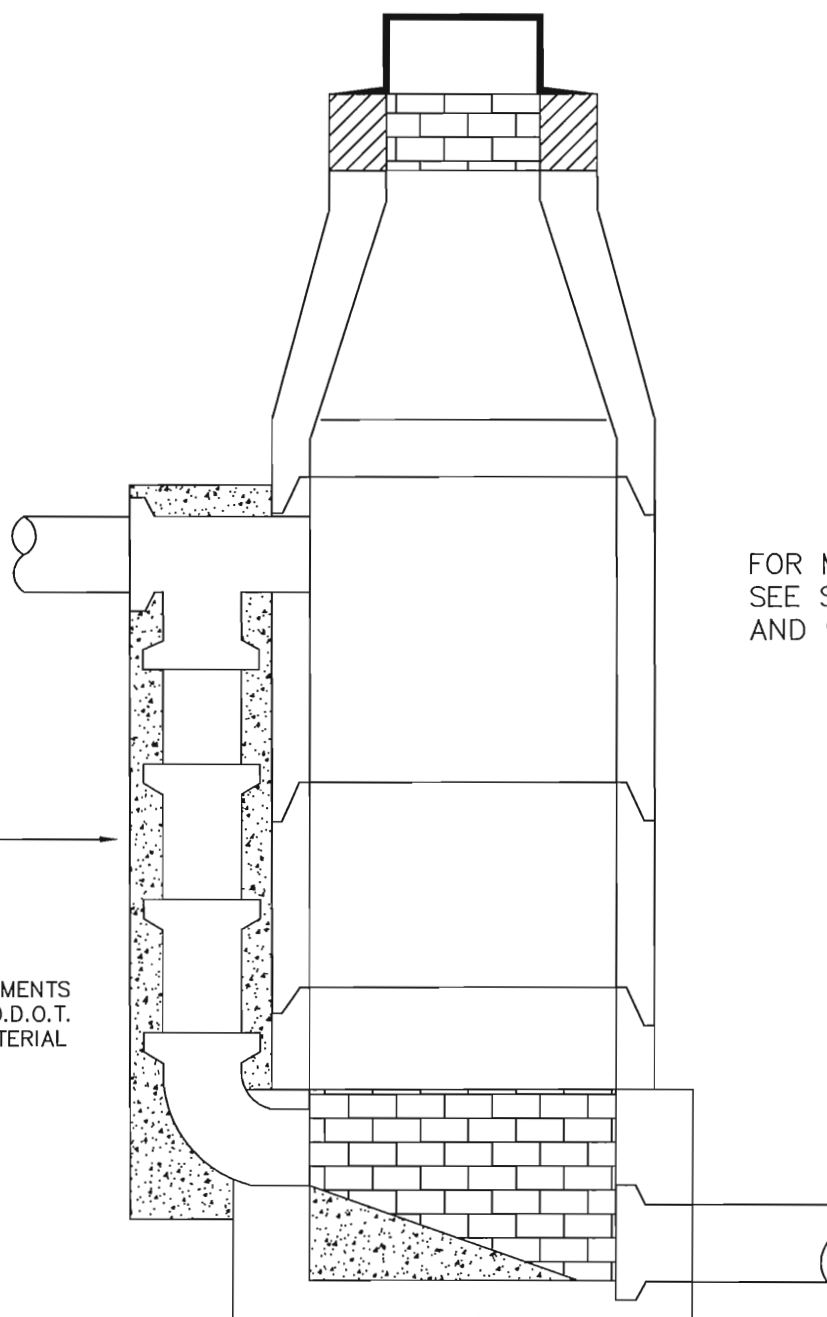


PLAN

NOTE: CENTER OPENING OVER STEPS, DIRECTLY
OVER DOWNSTREAM FLOW LINE



SECTION



FOR MANHOLE DETAILS
SEE STD. DWG. 900-0
AND 900-6.

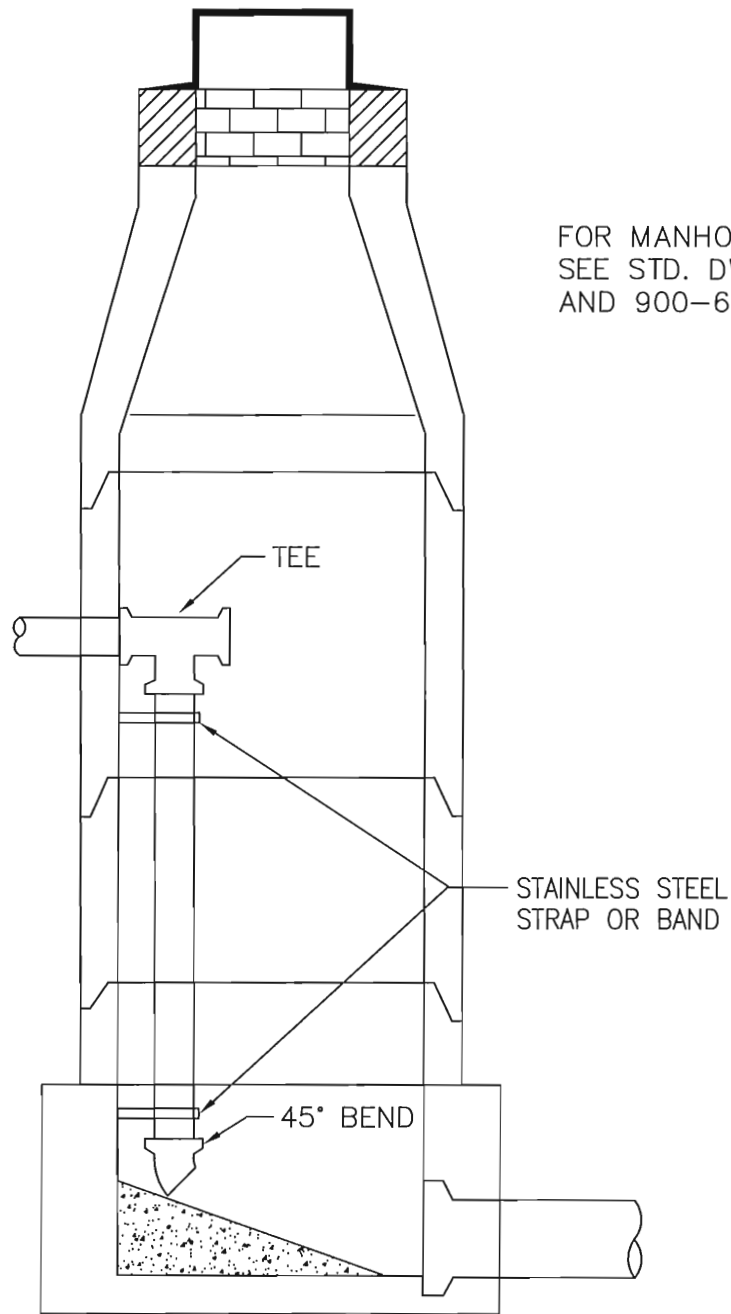
5" CLASS "C"
CONCRETE
ENCASEMENT.

FOR CONCRETE REQUIREMENTS
SEE ITEM NO. 499 OF O.D.O.T.
CONSTRUCTION AND MATERIAL
SPECIFICATIONS.

A DROP MANHOLE IS TO BE USED WHENEVER THE SEWER
ENTERING THE MANHOLE IS 2' OR MORE ABOVE THE
MANHOLE INVERT.

FOR CONCRETE REQUIREMENTS
SEE ITEM NO. 499 OF O.D.O.T.
CONSTRUCTION AND MATERIAL
SPECIFICATIONS.

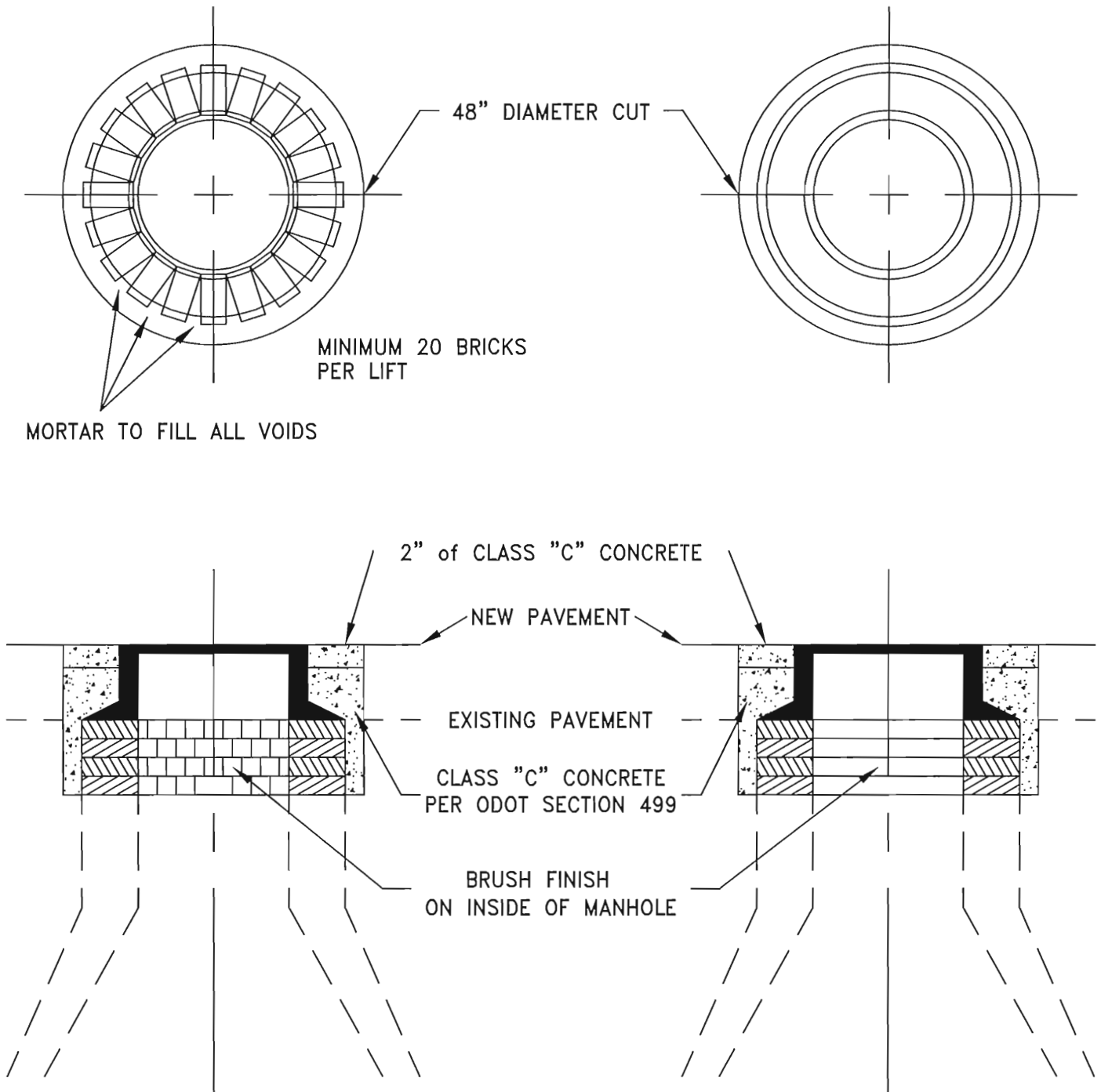
FOR MANHOLE DETAILS
SEE STD. DWG. 900-0
AND 900-6.

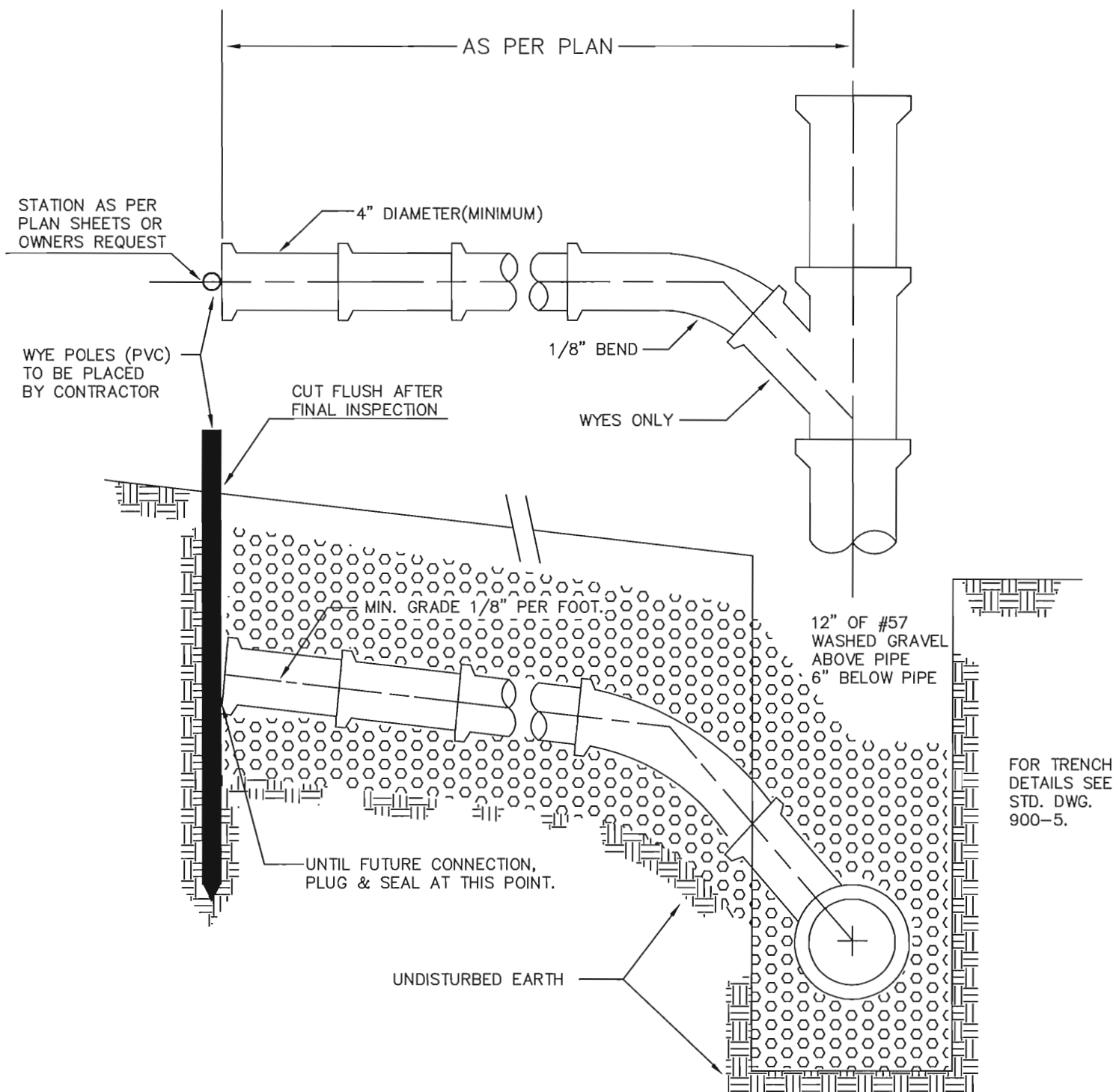


A DROP MANHOLE IS TO BE USED WHEN EVER THE SEWER
ENTERING THE MANHOLE IS 2' OR MORE ABOVE THE
MANHOLE INVERT.
MAXIMUM SIZE OF PIPE FOR INSIDE DROP IS 8" DIA.

SECTION 1 CONCRETE PAVING BRICKS

SECTION 2 PRECAST CONCRETE ADJUSTING RINGS





THIS DRAWING PERTAINS ONLY TO NEW SEWER CONSTRUCTION.

THE INVERT AT THE END OF THE LATERAL SHALL BE A MINIMUM OF 9.0 FT. BELOW EXISTING STREET C/L ELEVATION FOR VACANT LOTS.

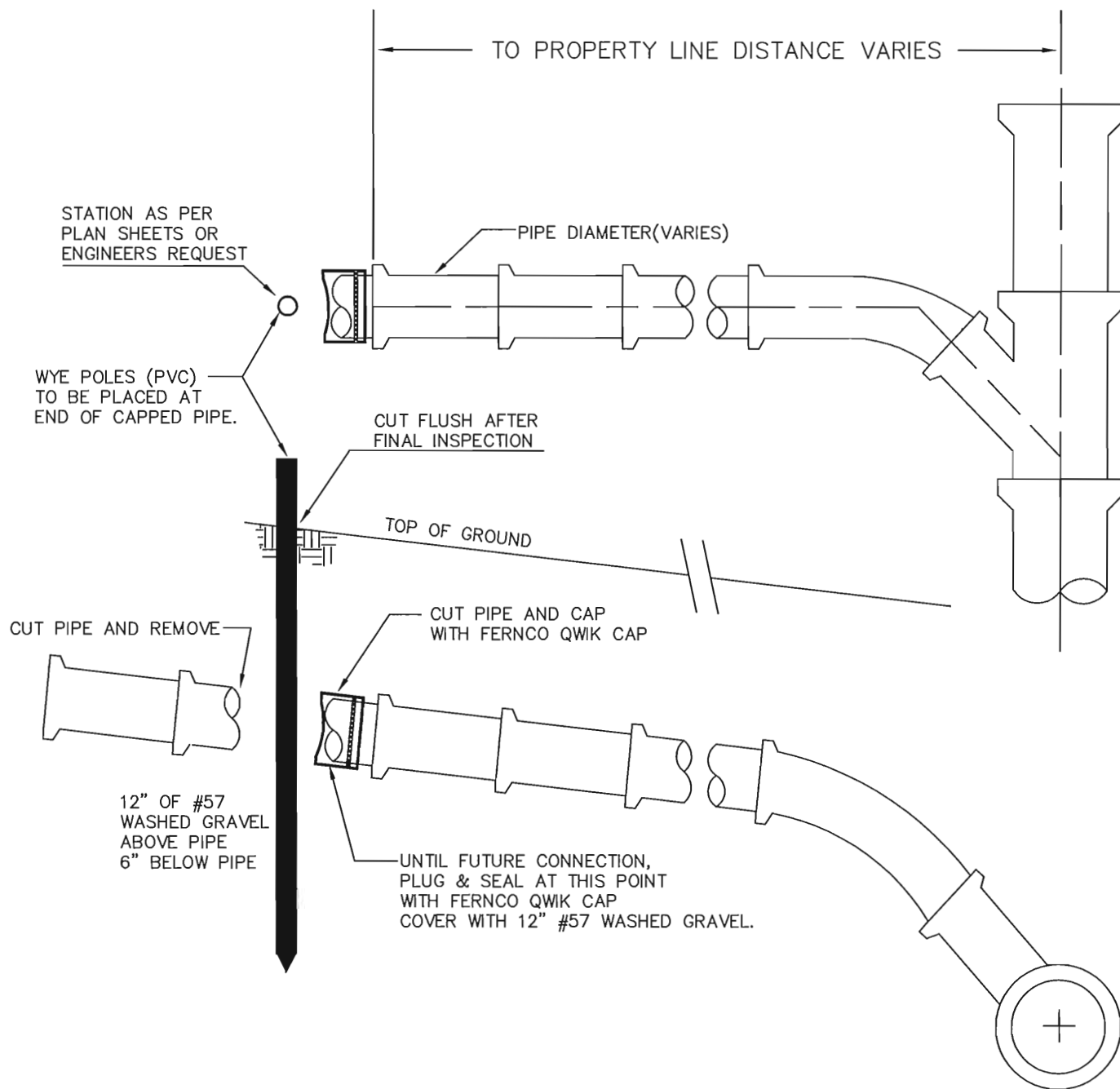
THE INVERT AT THE END OF THE LATERAL SHALL BE A MINIMUM OF 10.0 FT. BELOW FINISH FLOOR ELEVATION ON ALL EXISTING HOUSES.

LATERAL TO BE BEDDED IN MIN. OF 6" OF NO. 57 WASHED GRAVEL TO A DEPTH OF 12" OVER THE TOP OF THE PIPE.

CITY OF NEWARK, OHIO
DIVISION OF ENGINEERING

STANDARD DRAWING 900-4
HOUSE SEWER LATERALS

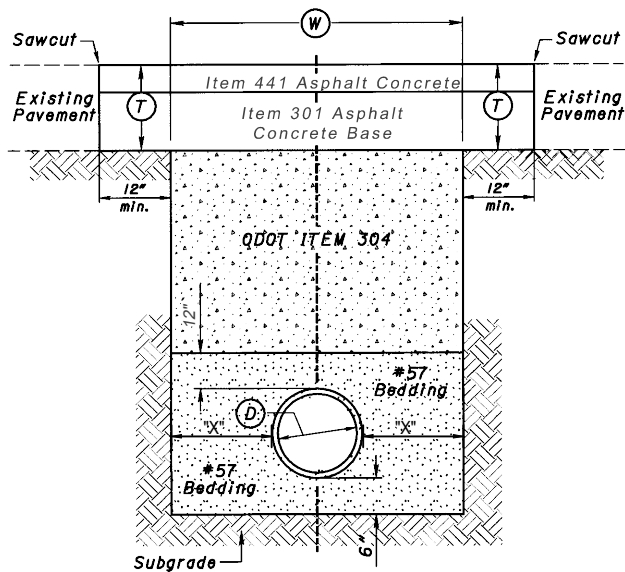
8-91
PIPES
REVISED
5-96 KELLEY
11-00 KELLEY



THIS DRAWING PERTAINS ONLY TO SEWER DISCONNECTION

CAPPED LATERAL TO BE BEDDED IN MIN. OF 6" OF NO. 57 WASHED GRAVEL TO A DEPTH OF 12" OVER THE TOP OF THE PIPE.

PAVEMENT



TYPICAL PIPE TRENCH DETAIL

NOTES:

THIS WORK SHALL CONSIST OF PAVEMENT REMOVAL, NECESSARY EXCAVATION, AND PAVEMENT REPLACEMENT IN ACCORDANCE WITH THE DETAILS SHOWN HEREIN. ALL WORK AND MATERIALS SHALL CONFORM TO THE REQUIREMENTS OF THE CURRENT CITY SPECIFICATIONS.

WHEN THE PAVEMENT HAS BEEN REMOVED AND THE CONTRACTOR IS UNABLE TO COMPLETE THE REQUIRED REPLACEMENT IN TIME FOR IT TO BE OPENED TO TRAFFIC AS INDICATED ON THE PERMIT, THE EXCAVATION SHALL BE FILLED WITH A PATCH MATERIAL WITH A DURABLE SURFACE OR PLATED. THE COST OF PLACING, MAINTAINING, REMOVING, AND DISPOSING OF TEMPORARY PATCHES OR PLATES WILL BE AT THE CONTRACTORS EXPENSE.

THE BACKFILLING, PAVEMENT REPAIR, AND/OR THE HEAT WELDING SHALL BE DONE BY THE CONTRACTOR OR PERMITEE IN ACCORDANCE WITH THE CITY SPECIFICATIONS.

PAVEMENT REPLACEMENT—

IF ASPHALT IS UNAVAILABLE AT THE TIME WHICH THE SEWER IS CONSTRUCTED., THEN TEMPORARY PAVEMENT SHALL BE USED AND 301 SHALL BE NON-PERFORMED. WHEN ASPHALT PLANTS REOPEN, THE CONTRACTOR SHALL REMOVE THE TOP 3 INCHES OF 452 AND REPLACE WITH 441. ALL COSTS ASSOCIATED WITH THIS OPERATION SHALL BE INCLUDED IN THE UNIT PRICE BID OF PAVEMENT ITEMS.

CODED NOTES

T - PAVEMENT THICKNESS.

1.25" MINIMUM *

ITEM 441 - ASPHALT CONCRETE SURFACE COURSE, TYPE I, (448) PG64-22

9" MINIMUM *

ITEM 301 - ASPHALT CONCRETE BASE, PG64-22
(3" MAX. LIFTS)

Z - TEMPORARY PAVEMENT THICKNESS.

3" ITEM 452 - PLAIN CONCRETE PAVEMENT
LAYER OF PLASTIC

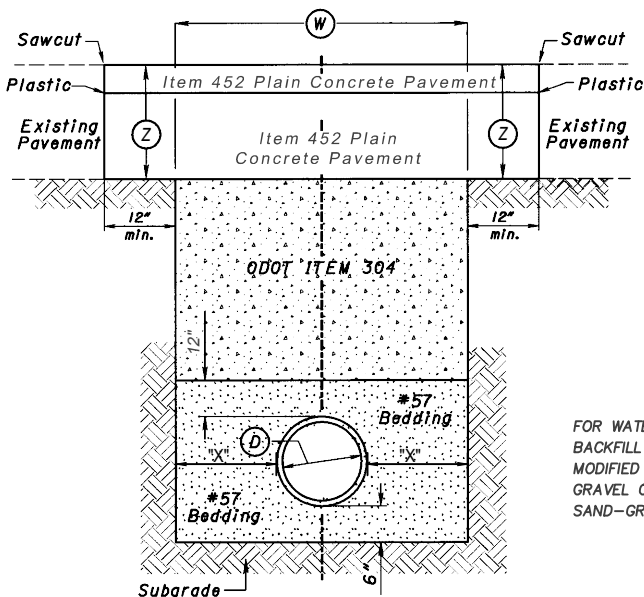
9" ITEM 452 - PLAIN CONCRETE PAVEMENT *

*CONTRACTOR TO MATCH EXISTING PAVEMENT BUILDUP IF THICKER.

"X"	"D"	"W"	MAXIMUM REPAVING SQ. YD. PER LIN. FT.	
			BRICK CONCRETE	BIT. MAC. TB MAC. ASPH. CONC.
12	6	30	0.500	0.278
12	8	32	0.519	0.296
12	10	34	0.537	0.315
12	12	36	0.556	0.333
12	18	42	0.611	0.389
12	21	45	0.639	0.418
12	24	48	0.667	0.444
15	27	51	0.694	0.472
15	30	54	0.722	0.500

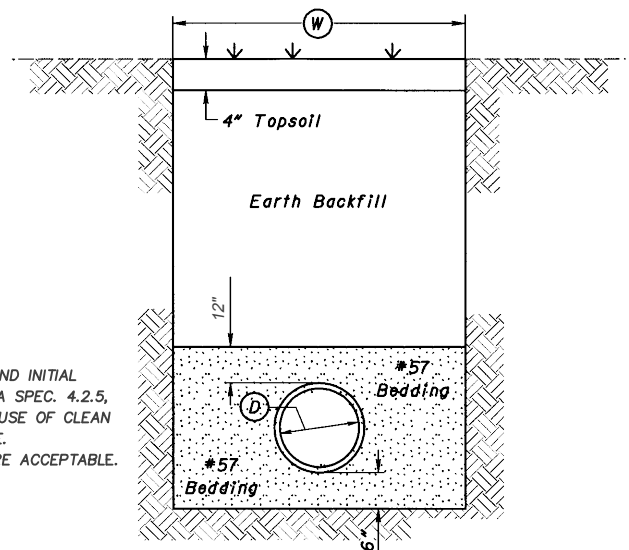
TRENCH DIMENSIONS

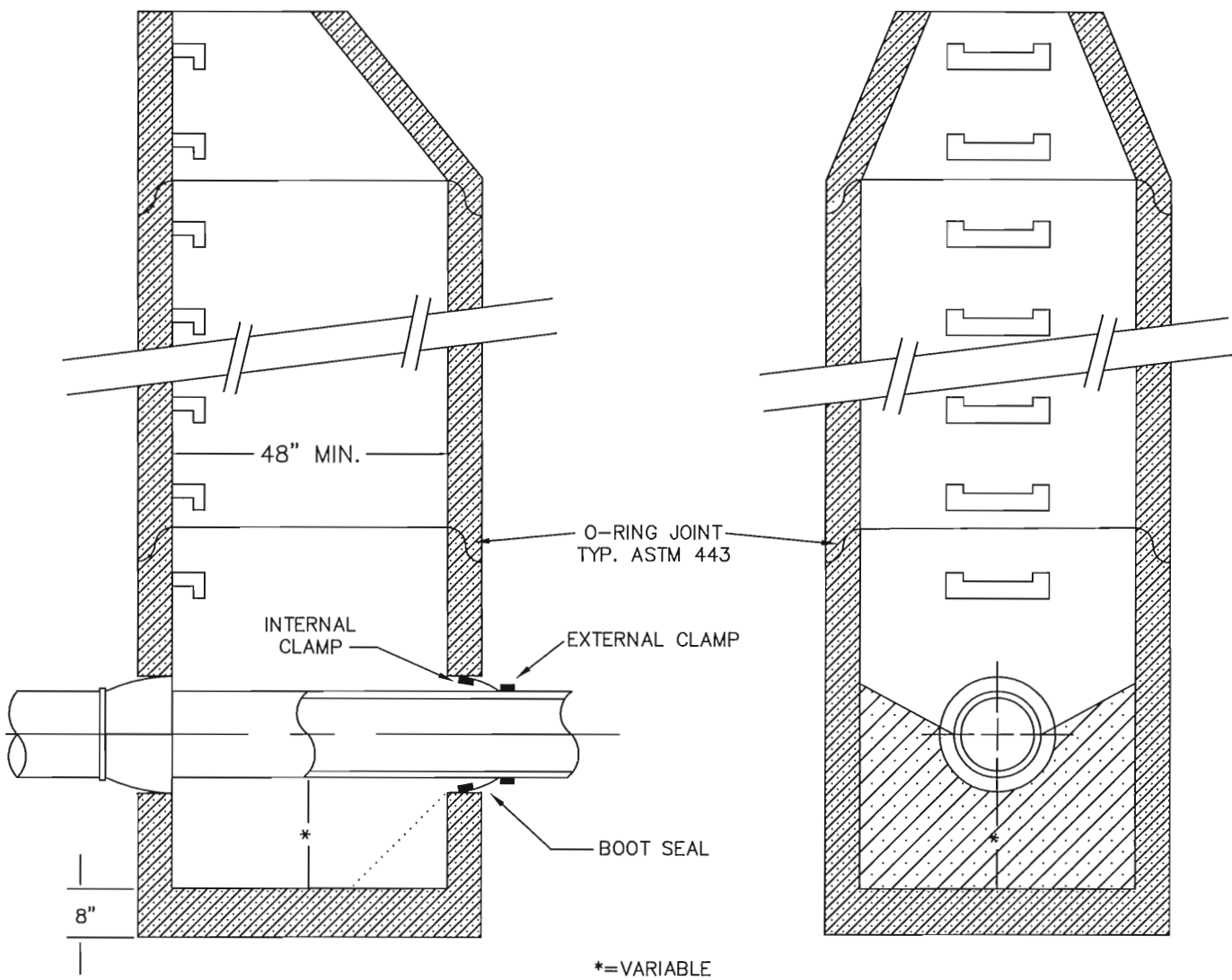
TEMPORARY PAVEMENT



FOR WATERLINE: BEDDING AND INITIAL
BACKFILL SHALL MEET AWWA SPEC. 4.2.5,
MODIFIED TO EXCLUDE THE USE OF CLEAN
GRAVEL OR CRUSHED STONE.
SAND-GRAVEL MIXTURES ARE ACCEPTABLE.

NON-PAVEMENT





SEE NOTES ON STANDARD DRAWING 900-0

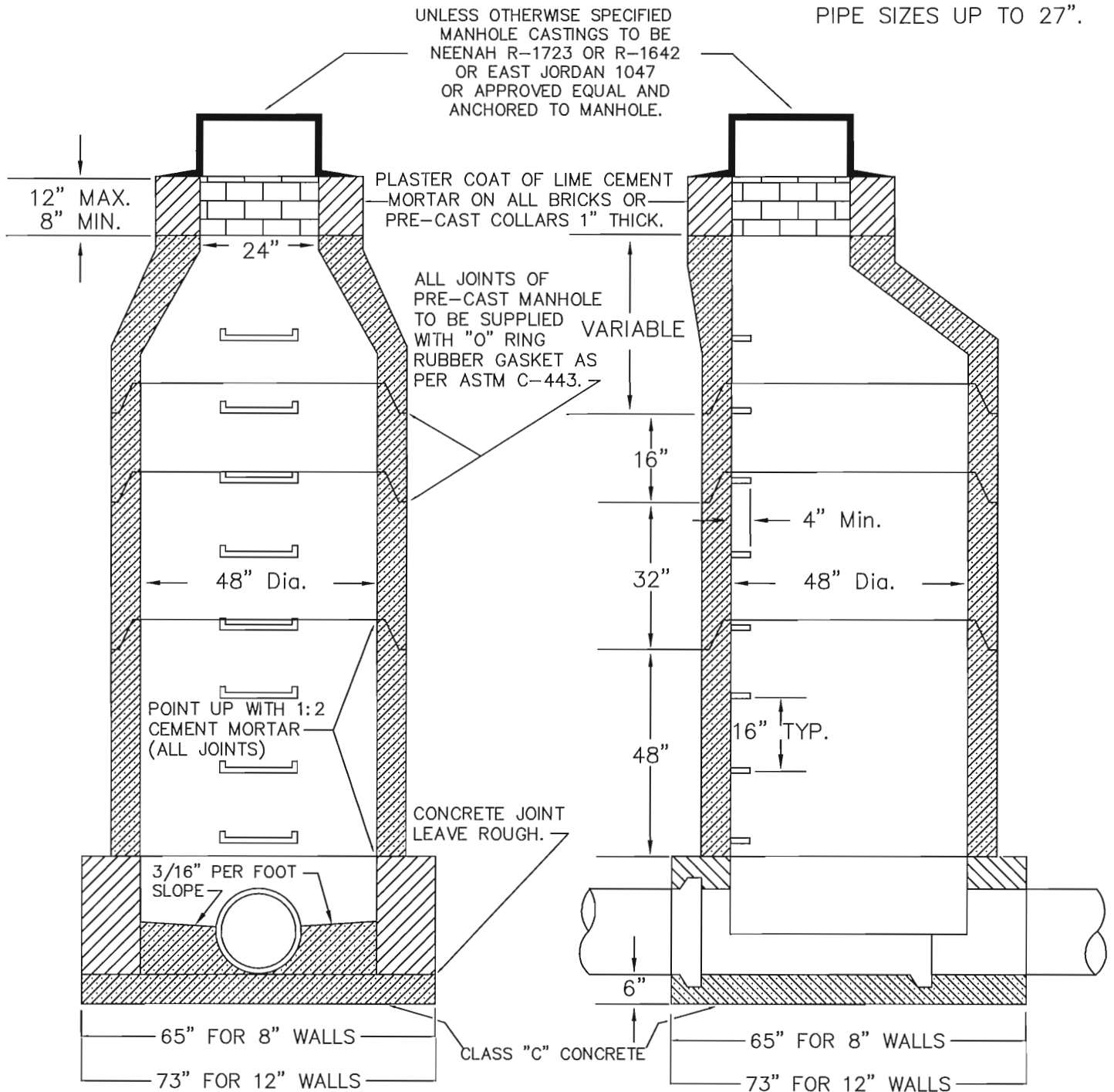
CITY OF NEWARK, OHIO
DIVISION OF ENGINEERING

STANDARD DRAWING 900-6

PRECAST CONCRETE MANHOLE
WITH PREFORMED CONNECTOR

7-91
PIPES
REVISED

THIS DRAWING APPLIES FOR
PIPE SIZES UP TO 27".



NOTE: ALL MANHOLES SHALL BE CONSTRUCTED TO THE ELEVATION OF THE PROPOSED STREET GRADE OR TO THE PRESENT GROUND ELEVATION, WHICHEVER IS HIGHER, UNLESS OTHERWISE ORDERED.

MANHOLE BARREL SECTIONS CAN BE MADE IN 16", 32", 48" AND 64" LAYING LENGTHS TO SUIT FIELD CONDITIONS. THESE SECTIONS SHALL BE USED IN SUCH COMBINATIONS AS WILL BE NECESSARY TO FIT EACH LOCATION.

MANHOLE STEPS TO BE NEENAH CAST IRON CAT. NO. R-1980-E OR FORGED ALUMINUM ALLOY PER ASTM B221 OR REINFORCED PROPYLENE PLASTIC, PER 711.31 ALL MEETING O.S.H.A. REQUIREMENTS.

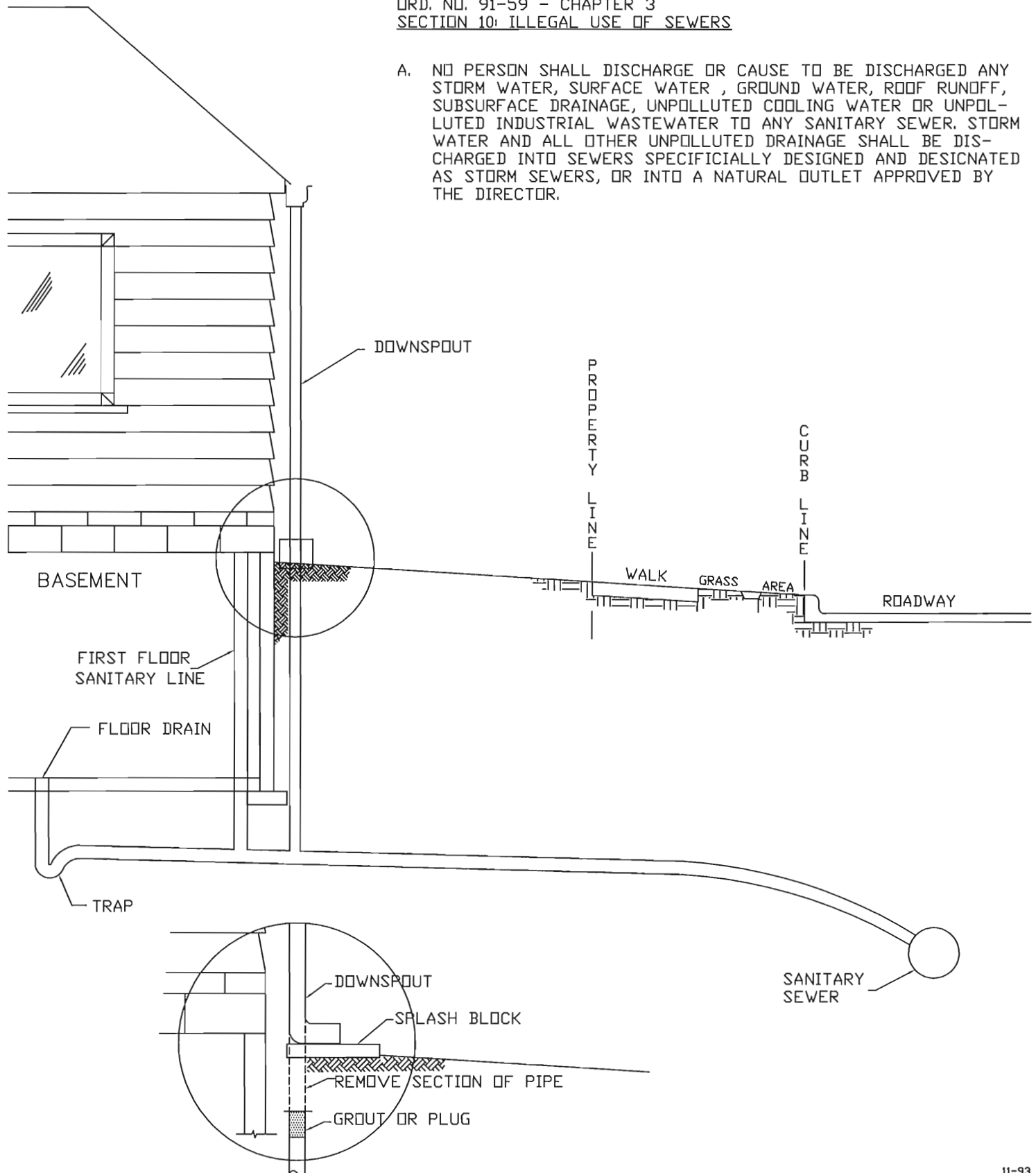
CITY OF NEWARK, OHIO
DIVISION OF ENGINEERING

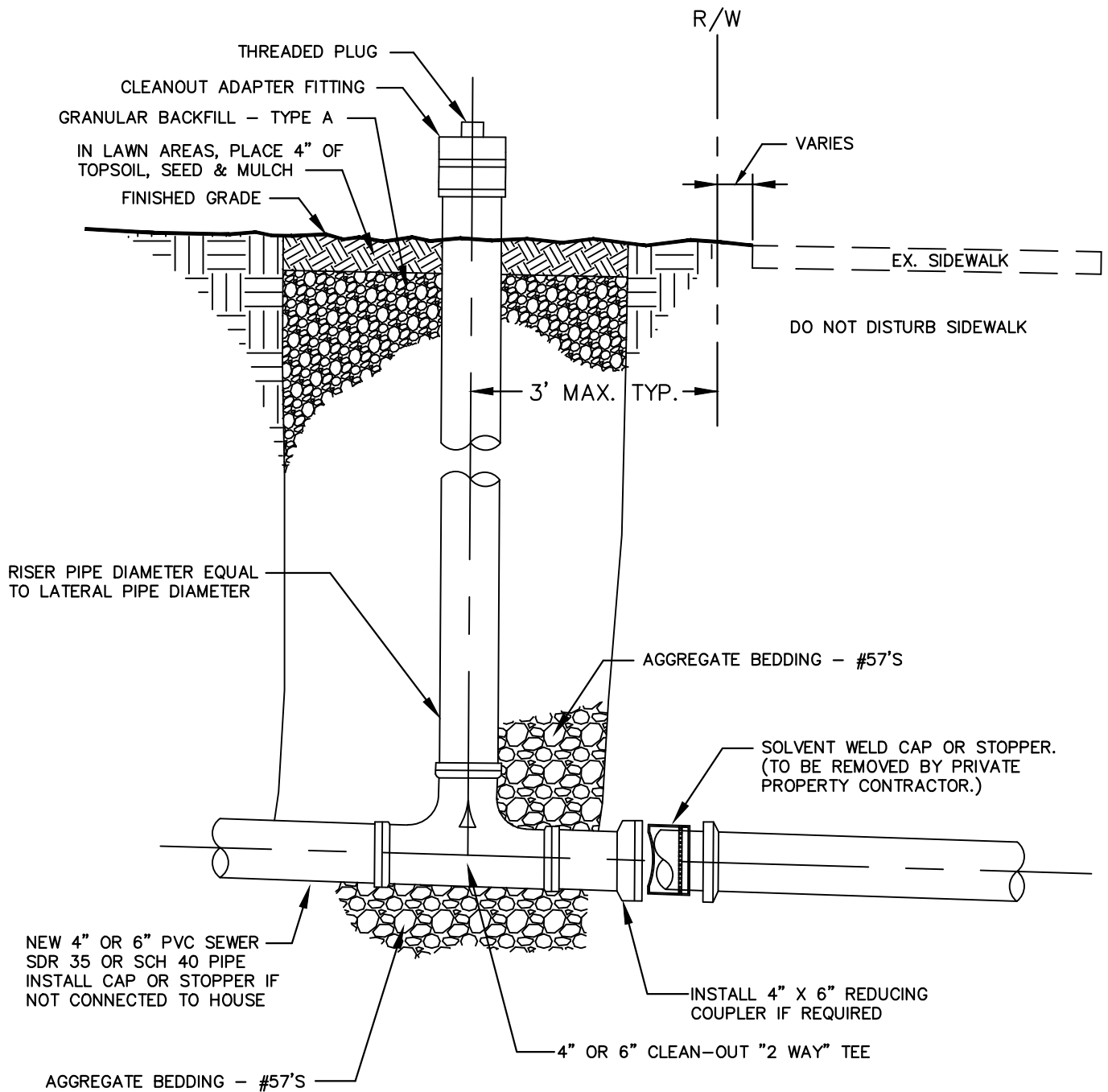
STANDARD DRAWING 900-7
STANDARD SAMPLING MANHOLES

7-91
PIPES
REVISED
5-96 KELLEY
2-98 KELLEY
2-06 KELLEY

ORD. NO. 91-59 - CHAPTER 3
SECTION 10: ILLEGAL USE OF SEWERS

- A. NO PERSON SHALL DISCHARGE OR CAUSE TO BE DISCHARGED ANY STORM WATER, SURFACE WATER, GROUND WATER, ROOF RUNOFF, SUBSURFACE DRAINAGE, UNPOLLUTED COOLING WATER OR UNPOLLUTED INDUSTRIAL WASTEWATER TO ANY SANITARY SEWER. STORM WATER AND ALL OTHER UNPOLLUTED DRAINAGE SHALL BE DISCHARGED INTO SEWERS SPECIFICALLY DESIGNED AND DESIGNATED AS STORM SEWERS, OR INTO A NATURAL OUTLET APPROVED BY THE DIRECTOR.





01-2013
KELLEY
REVISED

CITY OF NEWARK, OHIO
DIVISION OF ENGINEERING

STANDARD DRAWING 900-9
SEWER LATERAL CLEAN OUT