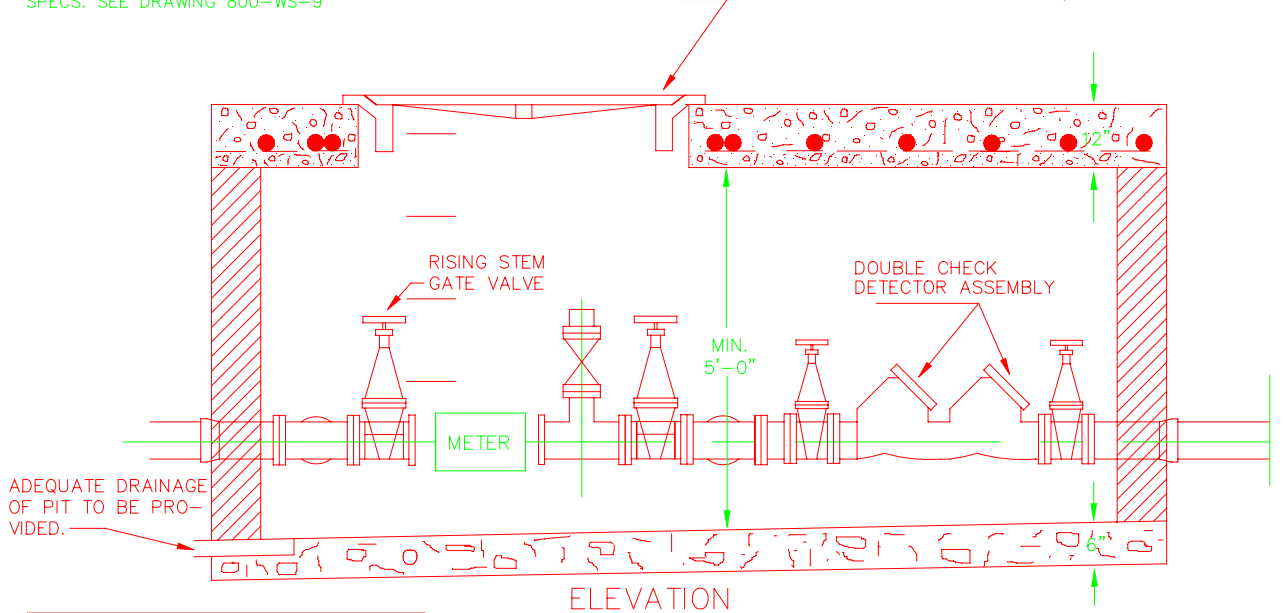


COVER TO BE BILCO DOOR, OR APPROVED EQUAL. INSIDE MEAS. 24"X48" OPEN.  
 SPECS. SEE DRAWING 800-WS-9



A	APPROXIMATE INSIDE DIMENSIONS OF METER PIT		
	DETECTOR METER		
	SIZE	LENGTH	WIDTH
2'-0"	4"	8'-0"	5'-0"
2'-8"	6"	10'-0"	6'-9"
3'-0"	8"	11'-0"	7'-3"
4'-0"	10"	14'-6"	8'-0"
COMPOUND METER			
2'-0"	4"	8'-6"	4'-0"
2'-3"	6"	11'-0"	4'-6"
2'-6"	8"	13'-0"	5'-0"
3'-6"	10"	14'-6"	7'-0"

NOTES:

- A. CHAMBER WALL MAY BE BRICK, CONCRETE OR CONCRETE BLOCK.
  - B. ALL FITTINGS TO BE NEWARK INSPECTED C.I.P. 150lbs. PER SQUARE INCH.
  - C. METER SETTING TO BE EQUIPPED WITH STANDARD 300lb. GAUGES & VALVES WITH BRASS FITTINGS. GAUGES SHALL BE LOCATED ON BOTH INLET AND OUTLET SIDE OF METER.
  - D. TEST TEE TO BE FULL SIZE WITH REDUCING FLANGE TO 2" NIPPLE AND 2" LOCKSTOP (PURCHASED THRU THE NEWARK WATER DEPT.) TEST TEE MUST BE LOCATED A MINIMUM OF 2 PIPE DIAMETERS DOWNSTREAM OF THE TURBO-METER.
- \* COMPOUND METERS - TEST TEE NOT REQUIRED (NEW INSTALLATIONS).

REF. DRAWING 800-WS-7 FOR SPEC.

CITY OF NEWARK, OHIO  
 DIVISION OF ENGINEERING

STANDARD DRAWING 800-WS-8  
 METER SETTING-LARGER THAN 2"

10-91  
 PIPES  
 REVISED  
 12-93 KELLEY  
 6-94 KELLEY  
 12-94 KELLEY  
 5-96 KELLEY  
 2-98 KELLEY  
 10-00 KELLEY